

AMBRAG

August 11th, 2005

ITS System Inventory Deliverable A2-c1

Draft

Central Coast ITS Implementation Plan

Association of Monterey Bay Area Governments

TRANSCORE

CENTRAL COAST ITS IMPLEMENTATION PLAN

ITS System Inventory

Deliverable A2-c1

Prepared for:

**Association of Monterey Bay Area Governments
&
CCITS Coordinating Group**

Prepared by:



626 Wilshire Blvd.
Suite 818
Los Angeles, California 90017

August 11th, 2005



TABLE OF CONTENTS	PAGE #
1. INTRODUCTION.....	1
1.1 Project Overview	1
2. CCITS SYSTEM INVENTORY	3
APPENDIX A - PROJECT ARCHITECTURE BY COUNTY	A-i
PROJECT ARCHITECTURE: SANTA CRUZ COUNTY.....	A-1
PROJECT ARCHITECTURE: SAN BENITO COUNTY.....	A-4
PROJECT ARCHITECTURE: MONTEREY COUNTY.....	A-6
PROJECT ARCHITECTURE: SAN LUIS OBISPO COUNTY.....	A-10
PROJECT ARCHITECTURE: SANTA BARBARA COUNTY.....	A-19
PROJECT ARCHITECTURE: AMBAG REGION.....	A-24
PROJECT ARCHITECTURE: CENTRAL COAST REGIONAL ITS PROJECTS.....	A-32



1. INTRODUCTION

1.1 Project Overview

The Central Coast Region has a long history of planning and designing Intelligent Transportation Systems (ITS). Beginning in 1998, Stakeholder Agencies from the 5-County Region (Santa Cruz, San Benito, Monterey, San Luis Obispo, Santa Barbara) came together to collaboratively begin the process to determine the Region's viability to apply ITS to the area's transportation issues. From 1998 through 2000, the Stakeholder Agencies, later identified as the Central Coast ITS Coordinating Group, worked in partnership with TransCore to develop the *2000 Central Coast ITS Strategic Deployment Plan (SDP)*.

The results of the *2000 SDP* were highly encouraging. Not only did the CCITS Coordinating Group conclude that ITS technology had tremendous potential for improving Regional mobility, safety, and economic competitiveness, the effort also developed the Central Coast Regional ITS Architecture, ITS promotional publications (e.g., brochure, video tape, presentation materials, etc.), list of specific ITS Projects to implement over a phased timeframe, and solidified the Group's commitment to ITS in the Central Coast. Subsequent to the development of the *2000 SDP* and fully committed to the on-going implementation of ITS in the Central Coast, the CCITS Coordinating Group continues to meet on a quarterly basis to guide ITS planning and deployment activities. The CCITS Coordinating Group has since become the body to advise the Central Coast Stakeholder Agencies on adherence/updates to the Regional ITS Architecture, advise and assist them in seeking discretionary funding for ITS Projects, and finally to coordinate and share information on planned or proposed ITS Projects in the Region.

Since the *2000 SDP* was completed, many ITS Projects that were identified within its contents have been implemented, such as:

- Caltrans District 5 Transportation Management Center (TMC)
- Detection stations along US 101 (via Minor B project funds) and as part of a roadway rehabilitation project
- Changeable Message Signs (CMS) located at the US 101 @ SR 154 interchange (NB & SB)
- Ramp meter (NB) located at the US 101 @ Carillo Blvd. interchange
- Monterey-Salinas Transit (MST) Automated Vehicle Location (AVL) system
- Dynamic Speed/Curve Warning system along SR 17 (including microwave/laser detection system, CCTV, & CMS)

Not only are these project implementations cause for excitement as they make evident the Central Coast's commitment to ITS, but they also demonstrate the CCITS Coordinating Group's actual use of the *2000 SDP*, indicating that it is indeed a plan/document that they really use and not just let sit on a shelf. Despite these ITS successes, the CCITS Coordinating Group wants to accomplish more. However, the recent funding climate in California and within the Central Coast has made it extremely difficult to obtain the necessary monies to implement more of the *2000 SDP's* ITS Projects. The following list identifies some of these high priority ITS Projects in the Central Coast that have yet to be implemented due to funding constraints:



- Installation and hook-up/connection of various ITS field elements from around the Central Coast (e.g., detection stations, CCTV, CMS, etc.) to the Caltrans District 5 TMC
- Connection between the Caltrans District 4 and 5 TMCs for monitoring and control capabilities of the ITS elements along Pacific Coast Highway (SR 1) & SR 17 (in Santa Cruz)
- Connections between the Caltrans District 5, District 6 (Fresno), and District 7 (Los Angeles) TMCs for information sharing and control/coordination purposes
- Implementation of the ramp meter (SB) at the US 101 @ Carillo Blvd. interchange

As the Central Coast Agencies continued their deployment, operation, and management of ITS devices, the CCITS Coordinating Group foresaw the benefits of reaching out to multiple groups throughout the Region. The concept of formulating a more cohesive ITS education piece could assist with informing more Agencies and policy makers about the “state of ITS” within the Region. The ITS promotional publications prepared for the *2000 SDP* have been used extensively to educate and inform both Agency staff as well as the general public about the value/benefits of ITS deployment, and its ability to improve not only the safety of the transportation network but also its efficiency and effectiveness of moving people and goods. The CCITS Coordinating Group continues to educate, whenever possible, and its members are strong advocates for improving capacity through technological advances.

At this time, Caltrans has awarded a grant to the Region under the FHWA Partnership Planning Program on the promotion and deployment of ITS in the Central Coast. Funded by this grant, the Central Coast ITS Implementation Plan project is expected to provide a more expeditious, unified, and consistent integration of ITS into the State and Regional transportation planning and programming processes in the Central Coast. Further, the Central Coast ITS Implementation project will perform the following activities for the Region:

- Utilize the work undertaken over the last several years and maintain the momentum gained
- Update the Central Coast Regional ITS Architecture to the National ITS Architecture (Version 5) and Turbo Architecture (Version 3)
- Ensure compliance of the Region with the current USDOT FHWA Rule and Federal Transit Administration Policy for National ITS Architecture
- Provide a strategy for moving forward with ITS
- Establish and implement a CCITS Regional Architecture Implementation Plan and Maintenance Plan
- Work with the Regional Stakeholder Agencies and Caltrans to incorporate ITS into the Regional transportation planning and programming process
- Provide cooperative agreement templates
- Review/update promotional/informational ITS publications
- Provide assistance promoting ITS technology and knowledge in the Central Coast
- Provide an authoritative resource of ITS information to Caltrans, Regional, and Local Agencies
- Provide training in the use of the Turbo Architecture software



2. CCITS SYSTEM INVENTORY

An ITS System Inventory is the foundation for all subsequent ITS Architecture development activities. It is a listing of each ITS-related element, deployed or planned, for all of the Stakeholders in the Region.

Turbo Architecture, a software tool developed for the FHWA, was utilized to input and manage the CCITS System Inventory (and Architecture as a whole). Exhibit 2.1 is a sample Turbo Inventory screen. In this example, the SLORTA’s planned “SLORTA Smart Card” ITS element has been created (or edited), assigned to the Transit Vehicle and Vehicle Subsystems, and mapped to the San Luis Obispo County and Central Coast Regional ITS Projects Project Architectures.

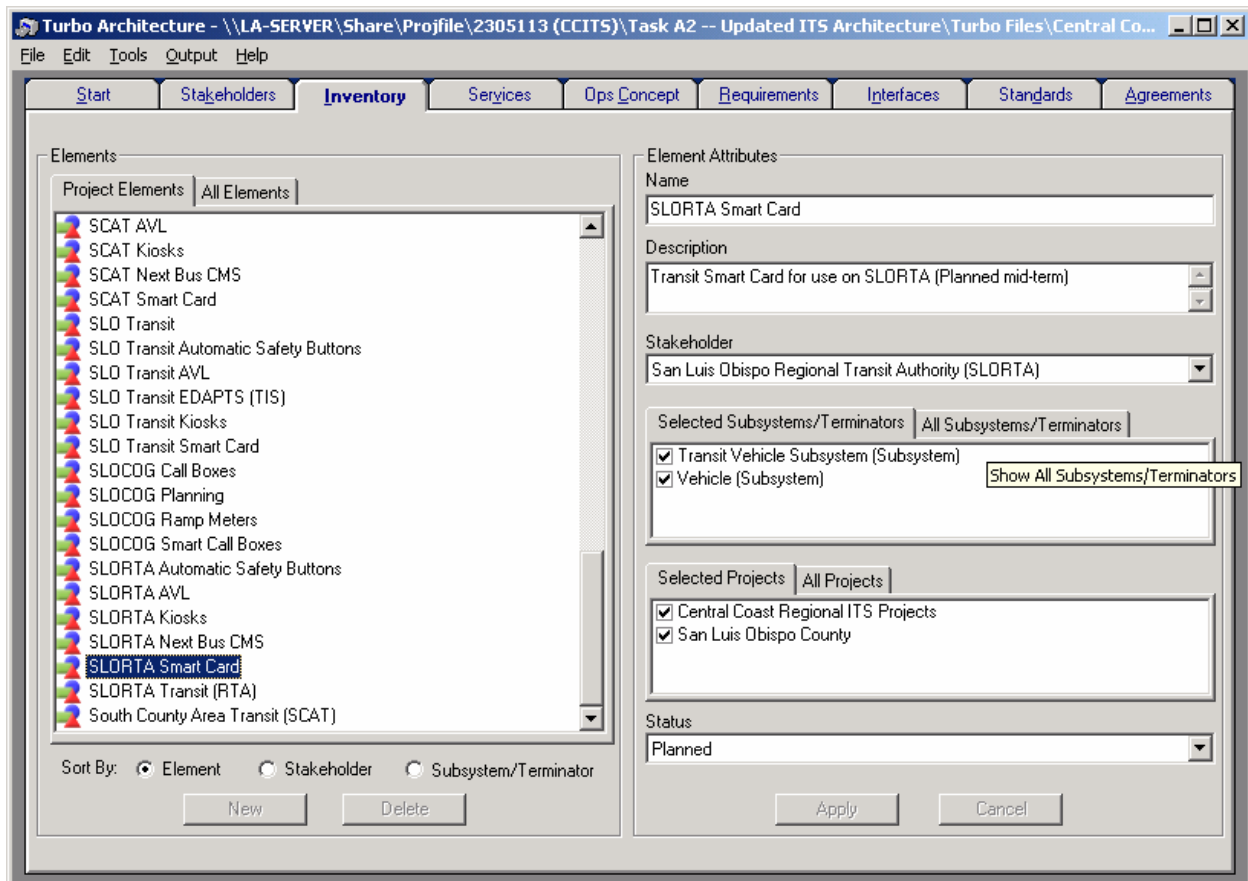


Exhibit 2.1 – Sample Turbo Inventory Screen

The Central Coast Region has been segregated into seven (7) project areas (Project Architectures in Turbo nomenclature): one for each of the five (5) Counties, one for AMBAG (made up mostly of inventory elements from the constituent County Project Architectures), and one for ITS elements of Regional significance (e.g., supporting/facilitating Regional collaboration, affecting multiple Counties, etc.).

Due to the structure of the CCITS Regional Architecture, it is quite possible that an inventory element is in multiple (non-County) Project Architectures. This can occur when the element is in an AMBAG member County or is of “Regional significance”. For example, in Exhibit 2.1,



smart cards are projects that could/should span multiple Agencies and are therefore of interest beyond just SLO County. Individual ITS System Inventory elements for each of the Project Architectures have also been assigned as part of the Regional Inventory as a whole.

The 2000 CCITS SDP Architecture was used as the starting point and was updated (changes in status, new inventory elements, etc.) via Stakeholder input at CCITS meetings and other communications, and the previous Turbo database was updated to reflect this new information.

The System Inventory report shown in Appendix A presents the ITS System Inventory for each of the Project Architectures that comprise the CCITS Regional Architecture. The following information is provided for each ITS element:

- Element name
- Stakeholder/Owner
- A brief description
- Deployment status (existing or planned)
- National ITS Architecture subsystem(s) (pre-defined representations of real-world transportation system functionality) to which it is mapped

Please see the FHWA's National ITS Architecture CD or visit their website (at <http://itsarch.iteris.com/itsarch/index.htm>) to get a more in-depth description of the concepts introduced above.



APPENDIX A- CCITS SYSTEM INVENTORY



APPENDIX A – CCITS SYSTEM INVENTORY

PROJECT ARCHITECTURE: SANTA CRUZ COUNTY

Caltrans D4 TMC

Description: Transportation Management Center for Caltrans District 4 located in the San Francisco Bay area; also backs up the District 5 TMC

Associated Stakeholder: Caltrans D4

Status: Existing

Mapped to Entity: Emergency Management

Mapped to Entity: Traffic Management

Caltrans D5 TMC

Description: Transportation Management Center for Caltrans District 5; located in San Luis Obispo. Planned joint operations w/ CHP

Associated Stakeholder: Caltrans D5

Status: Existing

Mapped to Entity: Emergency Management

Mapped to Entity: Traffic Management

Capitola Signal System

Description: City of Capitola signal system with synchronized signals & smart corridor

Associated Stakeholder: City of Capitola

Status: Existing

Mapped to Entity: Roadway Subsystem

Mapped to Entity: Traffic Management

CHP CAD

Description: Dispatch system for CHP in TMCs

Associated Stakeholder: California Highway Patrol (CHP)

Status: Existing

Mapped to Entity: Emergency Management

Santa Cruz (City) Advanced Crosswalks

Description: System(s) to increase driver awareness of potential pedestrian conflicts in Santa Cruz (City)

Associated Stakeholder: City of Santa Cruz

Status: Planned

Mapped to Entity: Roadway Subsystem

Santa Cruz (City) CCTV

Description: City of Santa Cruz CCTV cameras/system

Associated Stakeholder: City of Santa Cruz

Status: Existing

Mapped to Entity: Roadway Subsystem

Santa Cruz (City) Signal System

Description: Synchronized signal system in the City of Santa Cruz

Associated Stakeholder: City of Santa Cruz

Status: Existing

Mapped to Entity: Roadway Subsystem

Mapped to Entity: Traffic Management



Santa Cruz (City) TMC

Description: Traffic Management Center for the City of Santa Cruz
Associated Stakeholder: City of Santa Cruz
Status: Planned
Mapped to Entity: Traffic Management

Santa Cruz County CMS

Description: Changeable message signs in Santa Cruz County
Associated Stakeholder: Santa Cruz County
Status: Existing
Mapped to Entity: Roadway Subsystem

Santa Cruz County Emergency Medical Services

Description: Santa Cruz County EMT/ambulance system
Associated Stakeholder: Santa Cruz County Local Agencies
Status: Existing
Mapped to Entity: Emergency Management
Mapped to Entity: Emergency Vehicle Subsystem

Santa Cruz County Freeway Service Patrol

Description: Freeway service patrol for Santa Cruz County-area highways
Associated Stakeholder: Santa Cruz County
Status: Existing
Mapped to Entity: Emergency Management
Mapped to Entity: Emergency Vehicle Subsystem
Mapped to Entity: Roadway Subsystem

Santa Cruz County HAR

Description: Highway advisory radio in Santa Cruz County
Associated Stakeholder: Santa Cruz County
Status: Existing
Mapped to Entity: Roadway Subsystem

Santa Cruz County HRI

Description: Highway/rail intersections in Santa Cruz County
Associated Stakeholder: Santa Cruz County Local Agencies
Status: Planned
Mapped to Entity: Roadway Subsystem

Santa Cruz County Signal System

Description: Synchronized signal system operated by Santa Cruz County
Associated Stakeholder: Santa Cruz County
Status: Existing
Mapped to Entity: Roadway Subsystem
Mapped to Entity: Traffic Management

Santa Cruz County Website

Description: Informational website for Santa Cruz County (<http://www.co.santa-cruz.ca.us/>)
Associated Stakeholder: Santa Cruz County
Status: Existing
Mapped to Entity: Information Service Provider



Santa Cruz Parking (City and Private)

Description: Parking lots/systems in the City of Santa Cruz
Associated Stakeholder: Santa Cruz Parking (City & Private)
Status: Planned
Mapped to Entity: Parking Management

SC Metro (Santa Cruz Metropolitan Transit District)

Description: Transit operations for Santa Cruz metro area
Associated Stakeholder: Santa Cruz Metropolitan Transit District (SC Metro)
Status: Existing
Mapped to Entity: Transit Management
Mapped to Entity: Transit Vehicle Subsystem
Mapped to Entity: Vehicle

SC Metro Fare Management System

Description: Planned passenger and fare management system for SC Metro
Associated Stakeholder: Santa Cruz Metropolitan Transit District (SC Metro)
Status: Planned
Mapped to Entity: Transit Management
Mapped to Entity: Transit Vehicle Subsystem

SC Metro Traveler Information System

Description: Planned Traveler Information System for SC Metro
Associated Stakeholder: Santa Cruz Metropolitan Transit District (SC Metro)
Status: Planned
Mapped to Entity: Information Service Provider
Mapped to Entity: Personal Information Access
Mapped to Entity: Remote Traveler Support

SCCRTC Call Boxes

Description: Santa Cruz County-area highway call boxes
Associated Stakeholder: Santa Cruz County Regional Transportation Commission (SCCRTC)
Status: Existing
Mapped to Entity: Emergency Telecommunications System

SCCRTC Freeway Service Patrol

Description: Freeway service patrol for Santa Cruz-area freeways
Associated Stakeholder: Santa Cruz County Regional Transportation Commission (SCCRTC)
Status: Existing
Mapped to Entity: Emergency Management

SCCRTC Planning

Description: Transportation planning and data services for SCRTC
Associated Stakeholder: Santa Cruz County Regional Transportation Commission (SCCRTC)
Status: Existing
Mapped to Entity: Archived Data Management Subsystem

SCCRTC Smart Call Boxes

Description: Santa Cruz County-area highway smart call boxes
Associated Stakeholder: Santa Cruz County Regional Transportation Commission (SCCRTC)
Status: Planned
Mapped to Entity: Emergency Telecommunications System
Mapped to Entity: Remote Traveler Support
Mapped to Entity: Roadway Subsystem



PROJECT ARCHITECTURE: SAN BENITO COUNTY

Caltrans D5 TMC

Description: Transportation Management Center for Caltrans District 5; located in San Luis Obispo. Planned joint operations w/ CHP

Associated Stakeholder: Caltrans D5

Status: Existing

Mapped to Entity: Emergency Management

Mapped to Entity: Traffic Management

CHP CAD

Description: Dispatch system for CHP in TMCs

Associated Stakeholder: California Highway Patrol (CHP)

Status: Existing

Mapped to Entity: Emergency Management

Hollister Advanced Crosswalks

Description: System(s) to increase driver awareness of potential pedestrian conflicts in Hollister

Associated Stakeholder: City of Hollister

Status: Planned

Mapped to Entity: Roadway Subsystem

Hollister Signal System

Description: Synchronized signal system in the City of Hollister

Associated Stakeholder: City of Hollister

Status: Existing

Mapped to Entity: Roadway Subsystem

Mapped to Entity: Traffic Management

San Benito County Emergency Medical Services

Description: San Benito County EMT/ambulance system

Associated Stakeholder: San Benito County Local Agencies

Status: Existing

Mapped to Entity: Emergency Management

Mapped to Entity: Emergency Vehicle Subsystem

San Benito County Express (SBCE)

Description: Transit service for San Benito County

Associated Stakeholder: San Benito County Express (SBCE)

Status: Existing

Mapped to Entity: Transit Management

Mapped to Entity: Transit Vehicle Subsystem

Mapped to Entity: Vehicle

San Benito Parking (Local Agencies and Private)

Description: Parking lots/systems in San Benito

Associated Stakeholder: San Benito Parking (Local Agencies & Private)

Status: Planned

Mapped to Entity: Parking Management



SBtCOG Call Boxes

Description: San Benito County-area highway call boxes

Associated Stakeholder: Council of San Benito County Governments (SBtCOG)

Status: Existing

Mapped to Entity: Emergency Telecommunications System

SBtCOG Planning

Description: Transportation planning and data services for SBtCOG

Associated Stakeholder: Council of San Benito County Governments (SBtCOG)

Status: Existing

Mapped to Entity: Archived Data Management Subsystem

SBtCOG Smart Call Boxes

Description: San Benito County-area highway smart call boxes

Associated Stakeholder: Council of San Benito County Governments (SBtCOG)

Status: Planned

Mapped to Entity: Emergency Telecommunications System

Mapped to Entity: Remote Traveler Support

Mapped to Entity: Roadway Subsystem



PROJECT ARCHITECTURE: MONTEREY COUNTY

Caltrans D5 TMC

Description: Transportation Management Center for Caltrans District 5; located in San Luis Obispo. Planned joint operations w/ CHP

Associated Stakeholder: Caltrans D5

Status: Existing

Mapped to Entity: Emergency Management

Mapped to Entity: Traffic Management

CHP CAD

Description: Dispatch system for CHP in TMCs

Associated Stakeholder: California Highway Patrol (CHP)

Status: Existing

Mapped to Entity: Emergency Management

Greenfield Signal System

Description: Synchronized signal system in the City of Greenfield

Associated Stakeholder: City of Greenfield

Status: Planned

Mapped to Entity: Roadway Subsystem

Mapped to Entity: Traffic Management

King City Signal System

Description: Synchronized signal system in the City of King City

Associated Stakeholder: City of King City

Status: Planned

Mapped to Entity: Roadway Subsystem

Mapped to Entity: Traffic Management

Marina Signal System

Description: Synchronized signal system in the City of Marina

Associated Stakeholder: City of Marina

Status: Existing

Mapped to Entity: Roadway Subsystem

Mapped to Entity: Traffic Management

Monterey (City) Advanced Crosswalks

Description: System(s) to increase driver awareness of potential pedestrian conflicts in Monterey (City)

Associated Stakeholder: City of Monterey

Status: Existing

Mapped to Entity: Roadway Subsystem

Monterey (City) CMS

Description: Changeable message signs for the City of Monterey

Associated Stakeholder: City of Monterey

Status: Existing

Mapped to Entity: Roadway Subsystem

Monterey (City) HAR

Description: Highway advisory radio system for the City of Monterey

Associated Stakeholder: City of Monterey

Status: Existing

Mapped to Entity: Roadway Subsystem



Monterey (City) Signal System

Description: Synchronized signal system in the City of Monterey

Associated Stakeholder: City of Monterey

Status: Existing

Mapped to Entity: Roadway Subsystem

Mapped to Entity: Traffic Management

Monterey (City) TMC

Description: Traffic Management Center for the City of Monterey

Associated Stakeholder: City of Monterey

Status: Planned

Mapped to Entity: Traffic Management

Monterey County Emergency Medical Services

Description: Monterey County EMT/ambulance system

Associated Stakeholder: Monterey County Local Agencies

Status: Existing

Mapped to Entity: Emergency Management

Mapped to Entity: Emergency Vehicle Subsystem

Monterey County Freeway Service Patrol

Description: Freeway service patrol for Monterey County-area highways

Associated Stakeholder: Monterey County

Status: Existing

Mapped to Entity: Emergency Management

Monterey County HRI

Description: Highway/rail intersections in Monterey County

Associated Stakeholder: Monterey County Local Agencies

Status: Planned

Mapped to Entity: Roadway Subsystem

Monterey County Signal Pre-Emption

Description: Emergency vehicle signal pre-emption system for Monterey County

Associated Stakeholder: Monterey County

Status: Existing

Mapped to Entity: Roadway Subsystem

Monterey County Traffic Counters

Description: Motes traffic counters on various Regional roads in Monterey County (w/ TAMC)

Associated Stakeholder: Monterey County

Status: Planned

Mapped to Entity: Roadway Subsystem

Monterey Parking (Monterey, Carmel, and Private)

Description: Various parking lots/systems in Monterey County

Associated Stakeholder: Monterey County Local Agencies

Status: Planned

Mapped to Entity: Parking Management



MST (Monterey-Salinas Transit)

Description: Transit service for the Monterey-Salinas metro area

Associated Stakeholder: Monterey-Salinas Transit (MST)

Status: Existing

Mapped to Entity: Transit Management

Mapped to Entity: Transit Vehicle Subsystem

Mapped to Entity: Vehicle

MST AVL

Description: Vehicle location system for MST transit fleet

Associated Stakeholder: Monterey-Salinas Transit (MST)

Status: Existing

Mapped to Entity: Transit Management

Mapped to Entity: Transit Vehicle Subsystem

MST Integrated Maintenance Management Information System

Description: MST - Please provide info -

Associated Stakeholder: Monterey-Salinas Transit (MST)

Status: Planned

Mapped to Entity: Transit Management

Mapped to Entity: Transit Vehicle Subsystem

MST Signal Priority

Description: Signal priority system for MST fleet

Associated Stakeholder: Monterey-Salinas Transit (MST)

Status: Planned

Mapped to Entity: Roadway Subsystem

Pacific Grove Signal System

Description: Synchronized signal system in the City of Pacific Grove

Associated Stakeholder: City of Pacific Grove

Status: Existing

Mapped to Entity: Roadway Subsystem

Mapped to Entity: Traffic Management

Salinas Advanced Crosswalks

Description: System(s) to increase driver awareness of potential pedestrian conflicts in Salinas

Associated Stakeholder: City of Salinas

Status: Existing

Mapped to Entity: Roadway Subsystem

Salinas CVO ATIS

Description: ATIS to inform CVO/truckers to location of near-by staging areas (rather than parking in residential or business areas) while waiting to get cargo

Associated Stakeholder: City of Salinas

Status: Planned

Mapped to Entity: Roadway Subsystem

Salinas Signal System

Description: Synchronized signal system in the City of Salinas

Associated Stakeholder: City of Salinas

Status: Existing

Mapped to Entity: Roadway Subsystem

Mapped to Entity: Traffic Management



Salinas TMC

Description: Traffic Management Center for the City of Salinas
Associated Stakeholder: City of Salinas
Status: Planned
Mapped to Entity: Traffic Management

Seaside Signal System

Description: Synchronized signal system in the City of Seaside
Associated Stakeholder: City of Seaside
Status: Existing
Mapped to Entity: Roadway Subsystem
Mapped to Entity: Traffic Management

Soledad Signal System

Description: Synchronized signal system in the City of Soledad
Associated Stakeholder: City of Soledad
Status: Planned
Mapped to Entity: Roadway Subsystem
Mapped to Entity: Traffic Management

TAMC Call Boxes

Description: Monterey County-area highway call boxes
Associated Stakeholder: Transportation Agency for Monterey County (TAMC)
Status: Planned
Mapped to Entity: Emergency Telecommunications System

TAMC Freeway Service Patrol

Description: FSP services for Monterey County freeways
Associated Stakeholder: Transportation Agency for Monterey County (TAMC)
Status: Existing
Mapped to Entity: Emergency Management
Mapped to Entity: Emergency Vehicle Subsystem
Mapped to Entity: Roadway Subsystem

TAMC Planning

Description: Transportation planning and data services for TAMC
Associated Stakeholder: Transportation Agency for Monterey County (TAMC)
Status: Existing
Mapped to Entity: Archived Data Management Subsystem

TAMC Smart Call Boxes

Description: Monterey County-area highway smart call boxes
Associated Stakeholder: Transportation Agency for Monterey County (TAMC)
Status: Existing
Mapped to Entity: Emergency Telecommunications System
Mapped to Entity: Remote Traveler Support
Mapped to Entity: Roadway Subsystem



PROJECT ARCHITECTURE: SAN LUIS OBISPO COUNTY

Amtrak Next Train CMS

Description: Train arrival notification system at stations in Santa Barbara and San Luis Obispo Counties (Planned mid-term)

Associated Stakeholder: Amtrak

Status: Planned

Mapped to Entity: Roadway Subsystem

Arroyo Grande (Portable) CMS

Description: Portable CMS devices for the City of Arroyo Grande and shared with other Cities & the County (Planned - short-term)

Associated Stakeholder: City of Arroyo Grande

Status: Planned

Mapped to Entity: Roadway Subsystem

Arroyo Grande Advanced Crosswalks

Description: System(s) to increase driver awareness of potential pedestrian conflicts in Arroyo Grande (Planned short-term)

Associated Stakeholder: City of Arroyo Grande

Status: Planned

Mapped to Entity: Roadway Subsystem

Arroyo Grande Signal Pre-Emption

Description: Emergency vehicle signal pre-emption system for Arroyo Grande

Associated Stakeholder: City of Arroyo Grande

Status: Existing

Mapped to Entity: Roadway Subsystem

Arroyo Grande Signal System

Description: Signal system in the City of Arroyo Grande. Synchronization is planned mid-term (Grand, 101 I/Cs).

Associated Stakeholder: City of Arroyo Grande

Status: Existing

Mapped to Entity: Roadway Subsystem

Mapped to Entity: Traffic Management

Atascadero Advanced Crosswalks

Description: System(s) to increase driver awareness of potential pedestrian conflicts in San Luis Obispo County (Planned - short-term)

Associated Stakeholder: City of Atascadero

Status: Planned

Mapped to Entity: Roadway Subsystem

Atascadero Parking Management System

Description: Parking management system for the City of Atascadero (Planned - mid-term)

Associated Stakeholder: City of Atascadero

Status: Planned

Mapped to Entity: Parking Management



Atascadero Signal Pre-Emption

Description: Emergency vehicle signal pre-emption system for Atascadero
Associated Stakeholder: City of Atascadero
Status: Existing
Mapped to Entity: Roadway Subsystem

Atascadero Signal System

Description: Synchronized signal system in the City of Atascadero
Associated Stakeholder: City of Atascadero
Status: Existing
Mapped to Entity: Roadway Subsystem
Mapped to Entity: Traffic Management

Atascadero Transit

Description: Transit operations for the City of Atascadero
Associated Stakeholder: City of Atascadero
Status: Existing
Mapped to Entity: Transit Management
Mapped to Entity: Transit Vehicle Subsystem
Mapped to Entity: Vehicle

Atascadero Transit Next Bus CMS

Description: Bus arrival notification system at stations in Atascadero (Planned mid-term)
Associated Stakeholder: Atascadero Transit
Status: Planned
Mapped to Entity: Remote Traveler Support

Atascadero Transit Smart Card

Description: Transit Smart Card for use on Atascadero Transit (Planned long-term)
Associated Stakeholder: Atascadero Transit
Status: Planned
Mapped to Entity: Transit Management
Mapped to Entity: Transit Vehicle Subsystem

Atascadero Transit Smart Kiosk

Description: Kiosks for Atascadero Transit (Planned mid-term)
Associated Stakeholder: Atascadero Transit
Status: Planned
Mapped to Entity: Information Service Provider
Mapped to Entity: Remote Traveler Support

Caltrans D5 TMC

Description: Transportation Management Center for Caltrans District 5; located in San Luis Obispo. Planned joint operations w/ CHP
Associated Stakeholder: Caltrans D5
Status: Existing
Mapped to Entity: Emergency Management
Mapped to Entity: Traffic Management

CHP CAD

Description: Dispatch system for CHP in TMCs
Associated Stakeholder: California Highway Patrol (CHP)
Status: Existing
Mapped to Entity: Emergency Management



Grover Beach Advanced Crosswalks

Description: System(s) to increase driver awareness of potential pedestrian conflicts in Grover Beach (Planned mid-term)

Associated Stakeholder: City of Grover Beach

Status: Planned

Mapped to Entity: Roadway Subsystem

Grover Beach Advanced Rail Crossings

Description: Advanced RR crossings in Grover Beach (Planned - mid-term)

Associated Stakeholder: City of Grover Beach

Status: Planned

Mapped to Entity: Roadway Subsystem

Grover Beach Signal Pre-Emption

Description: Emergency vehicle signal pre-emption system for Grover Beach (Grand)

Associated Stakeholder: City of Grover Beach

Status: Existing

Mapped to Entity: Roadway Subsystem

Grover Beach Signal System

Description: Synchronized signal system in the City of Grover Beach (Grand)

Associated Stakeholder: City of Grover Beach

Status: Existing

Mapped to Entity: Roadway Subsystem

Mapped to Entity: Traffic Management

Paso Robles Advanced Crosswalks

Description: System(s) to increase driver awareness of potential pedestrian conflicts in the City of Paso Robles (Planned mid-term; 24th/Oak, Spring/34th)

Associated Stakeholder: City of Paso Robles

Status: Planned

Mapped to Entity: Roadway Subsystem

Paso Robles Advanced Rail Crossing

Description: Advanced RR crossings in Paso Robles (Planned - mid-term; Grand))

Associated Stakeholder: City of Paso Robles

Status: Planned

Mapped to Entity: Roadway Subsystem

Paso Robles Parking Management System

Description: Parking management system for the City of Paso Robles (Planned - mid-term)

Associated Stakeholder: City of Paso Robles

Status: Planned

Mapped to Entity: Parking Management

Paso Robles Signal Pre-Emption

Description: Emergency vehicle signal pre-emption system for Paso Robles

Associated Stakeholder: City of Paso Robles

Status: Existing

Mapped to Entity: Roadway Subsystem



Paso Robles Signal System

Description: Signal system in the City of Paso Robles. Some synchronization (Spring, Niblick) to be implemented (short term)

Associated Stakeholder: City of Paso Robles

Status: Existing

Mapped to Entity: Roadway Subsystem

Mapped to Entity: Traffic Management

Pismo Beach Advanced Crosswalks

Description: System(s) to increase driver awareness of potential pedestrian conflicts in the City of Pismo Beach

Associated Stakeholder: City of Pismo Beach

Status: Existing

Mapped to Entity: Roadway Subsystem

Pismo Beach Parking Management System

Description: Parking management system for the City of Pismo Beach (Planned - long-term)

Associated Stakeholder: City of Pismo Beach

Status: Planned

Mapped to Entity: Parking Management

Pismo Beach Signal Pre-Emption

Description: Emergency vehicle signal pre-emption system for Pismo Beach

Associated Stakeholder: City of Pismo Beach

Status: Existing

Mapped to Entity: Roadway Subsystem

Pismo Beach Signal System

Description: Signal system in the City of Pismo Beach

Associated Stakeholder: City of Pismo Beach

Status: Existing

Mapped to Entity: Roadway Subsystem

Mapped to Entity: Traffic Management

PRCATS (Paso Robles City Area Transit Service)

Description: Transit system for the Paso Robles area

Associated Stakeholder: Paso Robles City Area Transit Service (PRCATS)

Status: Existing

Mapped to Entity: Transit Management

Mapped to Entity: Transit Vehicle Subsystem

Mapped to Entity: Vehicle

PRCATS Smart Cards

Description: Transit Smart Card for use on PRCATS (Planned long-term)

Associated Stakeholder: Paso Robles City Area Transit Service (PRCATS)

Status: Planned

Mapped to Entity: Transit Management

Mapped to Entity: Transit Vehicle Subsystem



San Luis Obispo (City) Advanced Crosswalks

Description: System(s) to increase driver awareness of potential pedestrian conflicts in the City of San Luis Obispo

Associated Stakeholder: City of San Luis Obispo

Status: Existing

Mapped to Entity: Roadway Subsystem

San Luis Obispo (City) Advanced Rail Crossing

Description: Advanced RR crossings in an Luis Obispo (Planned - mid-term; Foothill, Orcutt)

Associated Stakeholder: City of San Luis Obispo

Status: Planned

Mapped to Entity: Roadway Subsystem

San Luis Obispo (City) Parking Management System

Description: Parking management system for the City of San Luis Obispo (Planned - short-term)

Associated Stakeholder: City of San Luis Obispo

Status: Planned

Mapped to Entity: Parking Management

San Luis Obispo (City) Signal Pre-Emption

Description: Emergency vehicle signal pre-emption system for the city of San Luis Obispo

Associated Stakeholder: City of San Luis Obispo

Status: Existing

Mapped to Entity: Roadway Subsystem

San Luis Obispo (City) Signal System

Description: Synchronized signal system in the City of San Luis Obispo

Associated Stakeholder: City of San Luis Obispo

Status: Existing

Mapped to Entity: Roadway Subsystem

Mapped to Entity: Traffic Management

San Luis Obispo (City) TMC

Description: Traffic Management Center for the City of San Luis Obispo (Planned long-term)

Associated Stakeholder: City of San Luis Obispo

Status: Planned

Mapped to Entity: Traffic Management

San Luis Obispo County Advanced Crosswalks

Description: System(s) to increase driver awareness of potential pedestrian conflicts in San Luis Obispo County (Planned mid-term)

Associated Stakeholder: San Luis Obispo County

Status: Planned

Mapped to Entity: Roadway Subsystem

San Luis Obispo County Advanced Rail Crossings

Description: Advanced RR crossings in an Luis Obispo (Planned - long-term; San Miguel)

Associated Stakeholder: San Luis Obispo County

Status: Planned

Mapped to Entity: Roadway Subsystem



San Luis Obispo County Emergency Medical Services

Description: San Luis Obispo County EMT/ambulance system
Associated Stakeholder: San Luis Obispo County Local Agencies
Status: Existing
Mapped to Entity: Emergency Management
Mapped to Entity: Emergency Vehicle Subsystem

San Luis Obispo County HRI

Description: Highway/rail intersections in San Luis Obispo County - Hwy 58 (Planned long-term)
Associated Stakeholder: San Luis Obispo County
Status: Planned
Mapped to Entity: Roadway Subsystem

San Luis Obispo County Signal Pre-Emption

Description: Emergency vehicle signal pre-emption system for San Luis Obispo County
Associated Stakeholder: San Luis Obispo County
Status: Existing
Mapped to Entity: Roadway Subsystem

San Luis Obispo County Signal System

Description: Synchronized signal system in San Luis Obispo County
Associated Stakeholder: San Luis Obispo County
Status: Existing
Mapped to Entity: Roadway Subsystem
Mapped to Entity: Traffic Management

San Luis Obispo Parking (City and Private)

Description: Parking lots/systems in SLO (City)
Associated Stakeholder: San Luis Obispo Parking (City & Private)
Status: Planned
Mapped to Entity: Parking Management

SCAT (South County Area Transit)

Description: Transit operations for the Five Cities (South County) area of SLO County
Associated Stakeholder: South County Area Transit (SCAT)
Status: Existing
Mapped to Entity: Transit Management
Mapped to Entity: Transit Vehicle Subsystem
Mapped to Entity: Vehicle

SCAT AVL

Description: Automatic Vehicle Location system for SCAT (Planned long-term)
Associated Stakeholder: South County Area Transit (SCAT)
Status: Planned
Mapped to Entity: Transit Vehicle Subsystem
Mapped to Entity: Vehicle

SCAT Kiosks

Description: Kiosks for SCAT (Planned mid-term)
Associated Stakeholder: South County Area Transit (SCAT)
Status: Planned
Mapped to Entity: Information Service Provider
Mapped to Entity: Remote Traveler Support



SCAT Next Bus CMS

Description: Bus arrival notification system at SCAT stations (Planned long-term)
Associated Stakeholder: South County Area Transit (SCAT)
Status: Planned
Mapped to Entity: Remote Traveler Support

SCAT Smart Card

Description: Transit Smart Card for use on SCAT (Planned mid-term)
Associated Stakeholder: South County Area Transit (SCAT)
Status: Planned
Mapped to Entity: Transit Management
Mapped to Entity: Transit Vehicle Subsystem

SLO Transit

Description: Transit operations for SLO (City)
Associated Stakeholder: San Luis Obispo Transit (SLO Transit)
Status: Existing
Mapped to Entity: Transit Management
Mapped to Entity: Transit Vehicle Subsystem
Mapped to Entity: Vehicle

SLO Transit Automatic Safety Buttons

Description: Bus driver mayday alert system for SLO Transit (Planned long-term)
Associated Stakeholder: San Luis Obispo Transit (SLO Transit)
Status: Planned
Mapped to Entity: Transit Vehicle Subsystem

SLO Transit AVL

Description: Automatic Vehicle Location system for SLO Transit (Planned mid-term)
Associated Stakeholder: San Luis Obispo Transit (SLO Transit)
Status: Planned
Mapped to Entity: Transit Vehicle Subsystem
Mapped to Entity: Vehicle

SLO Transit EDAPTS (TIS)

Description: Bus arrival notification system developed by Cal Poly
Associated Stakeholder: San Luis Obispo Transit (SLO Transit)
Status: Existing
Mapped to Entity: Remote Traveler Support
Mapped to Entity: Roadway Subsystem

SLO Transit Kiosks

Description: Kiosks for SLO Transit (Planned mid-term)
Associated Stakeholder: San Luis Obispo Transit (SLO Transit)
Status: Planned
Mapped to Entity: Information Service Provider
Mapped to Entity: Remote Traveler Support

SLO Transit Smart Card

Description: Transit Smart Card for use on SLO Transit (Planned mid-term)
Associated Stakeholder: San Luis Obispo Transit (SLO Transit)
Status: Planned
Mapped to Entity: Transit Management
Mapped to Entity: Transit Vehicle Subsystem



SLOCOG Call Boxes

Description: San Luis Obispo County-area highway call boxes
Associated Stakeholder: San Luis Obispo Council of Governments (SLOCOG)
Status: Existing
Mapped to Entity: Emergency Telecommunications System

SLOCOG Planning

Description: Transportation planning and data services for SLOCOG
Associated Stakeholder: San Luis Obispo Council of Governments (SLOCOG)
Status: Existing
Mapped to Entity: Archived Data Management Subsystem

SLOCOG Ramp Meters

Description: Freeway ramp meters in SLO County (Planned long-term)
Associated Stakeholder: San Luis Obispo Council of Governments (SLOCOG)
Status: Planned
Mapped to Entity: Roadway Subsystem

SLOCOG Smart Call Boxes

Description: San Luis Obispo County-area highway smart call boxes (Planned - long-term)
Associated Stakeholder: San Luis Obispo Council of Governments (SLOCOG)
Status: Planned
Mapped to Entity: Emergency Telecommunications System
Mapped to Entity: Remote Traveler Support
Mapped to Entity: Roadway Subsystem

SLORTA Automatic Safety Buttons

Description: Bus driver mayday alert system for SLORTA (Planned long-term)
Associated Stakeholder: San Luis Obispo Regional Transit Authority (SLORTA)
Status: Planned
Mapped to Entity: Transit Vehicle Subsystem

SLORTA AVL

Description: Automatic Vehicle Location system for SLORTA (Planned long-term)
Associated Stakeholder: San Luis Obispo Regional Transit Authority (SLORTA)
Status: Planned
Mapped to Entity: Transit Vehicle Subsystem
Mapped to Entity: Vehicle

SLORTA Kiosks

Description: Kiosks for SLORTA (Planned mid-term)
Associated Stakeholder: San Luis Obispo Regional Transit Authority (SLORTA)
Status: Planned
Mapped to Entity: Information Service Provider
Mapped to Entity: Transit Management

SLORTA Next Bus CMS

Description: Bus arrival notification system at SLORTA stations (Planned long-term)
Associated Stakeholder: San Luis Obispo Regional Transit Authority (SLORTA)
Status: Planned
Mapped to Entity: Remote Traveler Support



SLORTA Smart Card

Description: Transit Smart Card for use on SLORTA (Planned mid-term)

Associated Stakeholder: San Luis Obispo Regional Transit Authority (SLORTA)

Status: Planned

Mapped to Entity: Transit Vehicle Subsystem

Mapped to Entity: Vehicle

SLORTA Transit (RTA)

Description: San Luis Obispo Countywide transit

Associated Stakeholder: San Luis Obispo Regional Transit Authority (SLORTA)

Status: Existing

Mapped to Entity: Transit Management

Mapped to Entity: Transit Vehicle Subsystem

Mapped to Entity: Vehicle



PROJECT ARCHITECTURE: SANTA BARBARA COUNTY

Amtrak Next Train CMS

Description: Train arrival notification system at stations in Santa Barbara and San Luis Obispo Counties (Planned mid-term)

Associated Stakeholder: Amtrak

Status: Planned

Mapped to Entity: Roadway Subsystem

Buellton Advanced Crosswalks

Description: System(s) to increase driver awareness of potential pedestrian conflicts in Buellton

Associated Stakeholder: City of Buellton

Status: Existing

Mapped to Entity: Roadway Subsystem

Buellton Signal System

Description: City of Buellton signal system with synchronized signals & smart corridor

Associated Stakeholder: City of Buellton

Status: Existing

Mapped to Entity: Roadway Subsystem

Mapped to Entity: Traffic Management

Caltrans D5 TMC

Description: Transportation Management Center for Caltrans District 5; located in San Luis Obispo. Planned joint operations w/ CHP

Associated Stakeholder: Caltrans D5

Status: Existing

Mapped to Entity: Emergency Management

Mapped to Entity: Traffic Management

CHP CAD

Description: Dispatch system for CHP in TMCs

Associated Stakeholder: California Highway Patrol (CHP)

Status: Existing

Mapped to Entity: Emergency Management

Goleta Advanced Crosswalks

Description: System(s) to increase driver awareness of potential pedestrian conflicts in Goleta (prior County projects)

Associated Stakeholder: City of Goleta

Status: Existing

Mapped to Entity: Roadway Subsystem

Goleta Signal System

Description: Synchronized signal system in the City of Goleta

Associated Stakeholder: City of Goleta

Status: Existing

Mapped to Entity: Roadway Subsystem

Mapped to Entity: Traffic Management



Lompoc Signal System

Description: Lompoc traffic signal system, incl. synchronization

Associated Stakeholder: City of Lompoc

Status: Existing

Mapped to Entity: Roadway Subsystem

Mapped to Entity: Traffic Management

Lompoc Transit

Description: Transit operations for the City of Lompoc

Associated Stakeholder: Lompoc Transit

Status: Existing

Mapped to Entity: Transit Management

Mapped to Entity: Transit Vehicle Subsystem

Mapped to Entity: Vehicle

Lompoc Transit Vehicle Locator (AVL)

Description: AVL system for Lompoc Transit

Associated Stakeholder: Lompoc Transit

Status: Existing

Mapped to Entity: Transit Management

Mapped to Entity: Transit Vehicle Subsystem

Santa Barbara (City) Advanced Crosswalks

Description: System(s) to increase driver awareness of potential pedestrian conflicts in Santa Barbara (City)

Associated Stakeholder: City of Santa Barbara

Status: Planned

Mapped to Entity: Roadway Subsystem

Santa Barbara (City) Parking Management System

Description: Parking management system for downtown area and special events

Associated Stakeholder: City of Santa Barbara

Status: Existing

Mapped to Entity: Parking Management

Santa Barbara (City) Signal System

Description: City of Santa Barbara signal system with synchronized signals & smart corridor

Associated Stakeholder: City of Santa Barbara

Status: Existing

Mapped to Entity: Roadway Subsystem

Mapped to Entity: Traffic Management

Santa Barbara County CCTV

Description: Santa Barbara CCTV cameras/system

Associated Stakeholder: Santa Barbara County

Status: Existing

Mapped to Entity: Roadway Subsystem

Santa Barbara County Emergency Medical Services

Description: Santa Barbara County EMT/ambulance system

Associated Stakeholder: Santa Barbara County Local Agencies

Status: Existing

Mapped to Entity: Emergency Management

Mapped to Entity: Emergency Vehicle Subsystem



Santa Barbara County Signal System

Description: Santa Barbara County signal system with synchronized signals

Associated Stakeholder: Santa Barbara County

Status: Existing

Mapped to Entity: Roadway Subsystem

Mapped to Entity: Traffic Management

Santa Barbara County TMC

Description: Traffic Management Center for Santa Barbara County

Associated Stakeholder: Santa Barbara County

Status: Existing

Mapped to Entity: Traffic Management

Santa Barbara County Vehicle Detection

Description: Santa Barbara County vehicle detection system

Associated Stakeholder: Santa Barbara County

Status: Existing

Mapped to Entity: Roadway Subsystem

Santa Barbara Metropolitan Transit District (SBMTD)

Description: Transit operations for the Santa Barbara metro area

Associated Stakeholder: Santa Barbara Metropolitan Transit District (SBMTD)

Status: Existing

Mapped to Entity: Transit Management

Mapped to Entity: Transit Vehicle Subsystem

Mapped to Entity: Vehicle

Santa Barbara MTD AVL

Description: Automatic Vehicle Location system for SBMTD fleet

Associated Stakeholder: Santa Barbara Metropolitan Transit District (SBMTD)

Status: Existing

Mapped to Entity: Transit Management

Mapped to Entity: Transit Vehicle Subsystem

Santa Barbara MTD Kiosks

Description: Transit information kiosks for Santa Barbara MTD

Associated Stakeholder: Santa Barbara Metropolitan Transit District (SBMTD)

Status: Existing

Mapped to Entity: Information Service Provider

Mapped to Entity: Remote Traveler Support

Santa Barbara MTD Next Bus

Description: Next bus arrival system for SBMTD

Associated Stakeholder: Santa Barbara Metropolitan Transit District (SBMTD)

Status: Existing

Mapped to Entity: Remote Traveler Support

Santa Barbara MTD Website

Description: Website for SBMTD riders. Includes trip planning. (<http://www.sbmtd.gov/>)

Associated Stakeholder: Santa Barbara Metropolitan Transit District (SBMTD)

Status: Existing

Mapped to Entity: Information Service Provider

Mapped to Entity: Remote Traveler Support



Santa Barbara Parking (City and Private)

Description: Parking lots/system in Santa Barbara (City)
Associated Stakeholder: Santa Barbara Parking (City & Private)
Status: Planned
Mapped to Entity: Parking Management

Santa Maria Signal System

Description: City of Santa Maria signal system with synchronized signals
Associated Stakeholder: City of Santa Maria
Status: Existing
Mapped to Entity: Roadway Subsystem
Mapped to Entity: Traffic Management

Santa Maria TMC

Description: Traffic Management Center for the City of Santa Maria
Associated Stakeholder: City of Santa Maria
Status: Existing
Mapped to Entity: Traffic Management

SBCAG 511

Description: SB-area traveler information system(s)
Associated Stakeholder: Santa Barbara County Association of Governments (SBCAG)
Status: Existing
Mapped to Entity: Information Service Provider
Mapped to Entity: Personal Information Access

SBCAG Call Boxes

Description: SB-area highway call boxes
Associated Stakeholder: Santa Barbara County Association of Governments (SBCAG)
Status: Existing
Mapped to Entity: Emergency Telecommunications System

SBCAG Dynamic Carpool System

Description: Ride matching system for Santa Barbara area
Associated Stakeholder: Santa Barbara County Association of Governments (SBCAG)
Status: Existing
Mapped to Entity: Personal Information Access

SBCAG Freeway Service Patrol

Description: CHP-dispatched FSP for SB-area freeways
Associated Stakeholder: Santa Barbara County Association of Governments (SBCAG)
Status: Existing
Mapped to Entity: Emergency Management
Mapped to Entity: Emergency Vehicle Subsystem

SBCAG Planning

Description: Transportation planning and data services for SBCAG
Associated Stakeholder: Santa Barbara County Association of Governments (SBCAG)
Status: Existing
Mapped to Entity: Archived Data Management Subsystem



SBCAG Smart Call Boxes

Description: SB-area highway smart call boxes
Associated Stakeholder: Santa Barbara County Association of Governments (SBCAG)
Status: Existing
Mapped to Entity: Emergency Telecommunications System
Mapped to Entity: Remote Traveler Support
Mapped to Entity: Roadway Subsystem

SBCAG Smart Card

Description: Transit Smart Card for use on Clean Air Express/Vista transit systems
Associated Stakeholder: Santa Barbara County Association of Governments (SBCAG)
Status: Existing
Mapped to Entity: Transit Management
Mapped to Entity: Transit Vehicle Subsystem

SMAT (Santa Maria Area Transit)

Description: Transit operations for the City of Santa Maria
Associated Stakeholder: Santa Maria Area Transit (SMAT)
Status: Existing
Mapped to Entity: Transit Management
Mapped to Entity: Transit Vehicle Subsystem
Mapped to Entity: Vehicle

SMAT AVL

Description: Automatic Vehicle Location system for SMAT
Associated Stakeholder: Santa Maria Area Transit (SMAT)
Status: Existing
Mapped to Entity: Transit Management
Mapped to Entity: Transit Vehicle Subsystem

SMAT Smart Card

Description: Transit Smart Card for use on SMAT
Associated Stakeholder: Santa Maria Area Transit (SMAT)
Status: Existing
Mapped to Entity: Transit Management
Mapped to Entity: Transit Vehicle Subsystem

Solvang Signal System

Description: Solvang traffic signal system, incl. synchronization (SR 246)
Associated Stakeholder: City of Solvang
Status: Existing
Mapped to Entity: Roadway Subsystem
Mapped to Entity: Traffic Management

UCSB Smart Card

Description: UCSB Smart Card for Parking Program
Associated Stakeholder: UCSB
Status: Existing
Mapped to Entity: Parking Management



PROJECT ARCHITECTURE: AMBAG REGION

AMBAG Planning

Description: Transportation planning and data services for AMBAG (covering Santa Cruz, San Benito, and Monterey Counties)

Associated Stakeholder: Association of Monterey Bay Area Governments (AMBAG)

Status: Existing

Mapped to Entity: Archived Data Management Subsystem

Caltrans D4 TMC

Description: Transportation Management Center for Caltrans District 4 located in the San Francisco Bay area; also backs up the District 5 TMC

Associated Stakeholder: Caltrans D4

Status: Existing

Mapped to Entity: Emergency Management

Mapped to Entity: Traffic Management

Caltrans D5 TMC

Description: Transportation Management Center for Caltrans District 5; located in San Luis Obispo. Planned joint operations w/ CHP

Associated Stakeholder: Caltrans D5

Status: Existing

Mapped to Entity: Emergency Management

Mapped to Entity: Traffic Management

Capitola Signal System

Description: City of Capitola signal system with synchronized signals & smart corridor

Associated Stakeholder: City of Capitola

Status: Existing

Mapped to Entity: Roadway Subsystem

Mapped to Entity: Traffic Management

Greenfield Signal System

Description: Synchronized signal system in the City of Greenfield

Associated Stakeholder: City of Greenfield

Status: Planned

Mapped to Entity: Roadway Subsystem

Mapped to Entity: Traffic Management

Hollister Advanced Crosswalks

Description: System(s) to increase driver awareness of potential pedestrian conflicts in Hollister

Associated Stakeholder: City of Hollister

Status: Planned

Mapped to Entity: Roadway Subsystem

Hollister Signal System

Description: Synchronized signal system in the City of Hollister

Associated Stakeholder: City of Hollister

Status: Existing

Mapped to Entity: Roadway Subsystem

Mapped to Entity: Traffic Management



King City Signal System

Description: Synchronized signal system in the City of King City

Associated Stakeholder: City of King City

Status: Planned

Mapped to Entity: Roadway Subsystem

Mapped to Entity: Traffic Management

Marina Signal System

Description: Synchronized signal system in the City of Marina

Associated Stakeholder: City of Marina

Status: Existing

Mapped to Entity: Roadway Subsystem

Mapped to Entity: Traffic Management

Monterey (City) Advanced Crosswalks

Description: System(s) to increase driver awareness of potential pedestrian conflicts in Monterey (City)

Associated Stakeholder: City of Monterey

Status: Existing

Mapped to Entity: Roadway Subsystem

Monterey (City) CMS

Description: Changeable message signs for the City of Monterey

Associated Stakeholder: City of Monterey

Status: Existing

Mapped to Entity: Roadway Subsystem

Monterey (City) HAR

Description: Highway advisory radio system for the City of Monterey

Associated Stakeholder: City of Monterey

Status: Existing

Mapped to Entity: Roadway Subsystem

Monterey (City) Signal System

Description: Synchronized signal system in the City of Monterey

Associated Stakeholder: City of Monterey

Status: Existing

Mapped to Entity: Roadway Subsystem

Mapped to Entity: Traffic Management

Monterey (City) TMC

Description: Traffic Management Center for the City of Monterey

Associated Stakeholder: City of Monterey

Status: Planned

Mapped to Entity: Traffic Management

Monterey County Emergency Medical Services

Description: Monterey County EMT/ambulance system

Associated Stakeholder: Monterey County Local Agencies

Status: Existing

Mapped to Entity: Emergency Management

Mapped to Entity: Emergency Vehicle Subsystem



Monterey County HRI

Description: Highway/rail intersections in Monterey County
Associated Stakeholder: Monterey County Local Agencies
Status: Planned
Mapped to Entity: Roadway Subsystem

Monterey County Signal Pre-Emption

Description: Emergency vehicle signal pre-emption system for Monterey County
Associated Stakeholder: Monterey County
Status: Existing
Mapped to Entity: Roadway Subsystem

Monterey County Traffic Counters

Description: Motes traffic counters on various Regional roads in Monterey County (w/ TAMC)
Associated Stakeholder: Monterey County
Status: Planned
Mapped to Entity: Roadway Subsystem

Monterey Parking (Monterey, Carmel, and Private)

Description: Various parking lots/systems in Monterey County
Associated Stakeholder: Monterey County Local Agencies
Status: Planned
Mapped to Entity: Parking Management

MST (Monterey-Salinas Transit)

Description: Transit service for the Monterey-Salinas metro area
Associated Stakeholder: Monterey-Salinas Transit (MST)
Status: Existing
Mapped to Entity: Transit Management
Mapped to Entity: Transit Vehicle Subsystem
Mapped to Entity: Vehicle

MST AVL

Description: Vehicle location system for MST transit fleet
Associated Stakeholder: Monterey-Salinas Transit (MST)
Status: Existing
Mapped to Entity: Transit Management
Mapped to Entity: Transit Vehicle Subsystem

MST Integrated Maintenance Management Information System

Description: MST - Please provide info -
Associated Stakeholder: Monterey-Salinas Transit (MST)
Status: Planned
Mapped to Entity: Transit Management
Mapped to Entity: Transit Vehicle Subsystem

MST Signal Priority

Description: Signal priority system for MST fleet
Associated Stakeholder: Monterey-Salinas Transit (MST)
Status: Planned
Mapped to Entity: Roadway Subsystem



Pacific Grove Signal System

Description: Synchronized signal system in the City of Pacific Grove

Associated Stakeholder: City of Pacific Grove

Status: Existing

Mapped to Entity: Roadway Subsystem

Mapped to Entity: Traffic Management

Salinas Advanced Crosswalks

Description: System(s) to increase driver awareness of potential pedestrian conflicts in Salinas

Associated Stakeholder: City of Salinas

Status: Existing

Mapped to Entity: Roadway Subsystem

Salinas CVO ATIS

Description: ATIS to inform CVO/truckers to location of near-by staging areas (rather than parking in residential or business areas) while waiting to get cargo

Associated Stakeholder: City of Salinas

Status: Planned

Mapped to Entity: Roadway Subsystem

Salinas Signal System

Description: Synchronized signal system in the City of Salinas

Associated Stakeholder: City of Salinas

Status: Existing

Mapped to Entity: Roadway Subsystem

Mapped to Entity: Traffic Management

Salinas TMC

Description: Traffic Management Center for the City of Salinas

Associated Stakeholder: City of Salinas

Status: Planned

Mapped to Entity: Traffic Management

San Benito County Emergency Medical Services

Description: San Benito County EMT/ambulance system

Associated Stakeholder: San Benito County Local Agencies

Status: Existing

Mapped to Entity: Emergency Management

Mapped to Entity: Emergency Vehicle Subsystem

San Benito County Express (SBCE)

Description: Transit service for San Benito County

Associated Stakeholder: San Benito County Express (SBCE)

Status: Existing

Mapped to Entity: Transit Management

Mapped to Entity: Transit Vehicle Subsystem

Mapped to Entity: Vehicle

San Benito Parking (Local Agencies and Private)

Description: Parking lots/systems in San Benito

Associated Stakeholder: San Benito Parking (Local Agencies & Private)

Status: Planned

Mapped to Entity: Parking Management



Santa Cruz (City) Advanced Crosswalks

Description: System(s) to increase driver awareness of potential pedestrian conflicts in Santa Cruz (City)

Associated Stakeholder: City of Santa Cruz

Status: Planned

Mapped to Entity: Roadway Subsystem

Santa Cruz (City) CCTV

Description: City of Santa Cruz CCTV cameras/system

Associated Stakeholder: City of Santa Cruz

Status: Existing

Mapped to Entity: Roadway Subsystem

Santa Cruz (City) Signal System

Description: Synchronized signal system in the City of Santa Cruz

Associated Stakeholder: City of Santa Cruz

Status: Existing

Mapped to Entity: Roadway Subsystem

Mapped to Entity: Traffic Management

Santa Cruz (City) TMC

Description: Traffic Management Center for the City of Santa Cruz

Associated Stakeholder: City of Santa Cruz

Status: Planned

Mapped to Entity: Traffic Management

Santa Cruz County CMS

Description: Changeable message signs in Santa Cruz County

Associated Stakeholder: Santa Cruz County

Status: Existing

Mapped to Entity: Roadway Subsystem

Santa Cruz County Emergency Medical Services

Description: Santa Cruz County EMT/ambulance system

Associated Stakeholder: Santa Cruz County Local Agencies

Status: Existing

Mapped to Entity: Emergency Management

Mapped to Entity: Emergency Vehicle Subsystem

Santa Cruz County Freeway Service Patrol

Description: Freeway service patrol for Santa Cruz County-area highways

Associated Stakeholder: Santa Cruz County

Status: Existing

Mapped to Entity: Emergency Management

Mapped to Entity: Emergency Vehicle Subsystem

Mapped to Entity: Roadway Subsystem

Santa Cruz County HAR

Description: Highway advisory radio in Santa Cruz County

Associated Stakeholder: Santa Cruz County

Status: Existing

Mapped to Entity: Roadway Subsystem



Santa Cruz County HRI

Description: Highway/rail intersections in Santa Cruz County
Associated Stakeholder: Santa Cruz County Local Agencies
Status: Planned
Mapped to Entity: Roadway Subsystem

Santa Cruz County Signal System

Description: Synchronized signal system operated by Santa Cruz County
Associated Stakeholder: Santa Cruz County
Status: Existing
Mapped to Entity: Roadway Subsystem
Mapped to Entity: Traffic Management

Santa Cruz County Website

Description: Informational website for Santa Cruz County (<http://www.co.santa-cruz.ca.us/>)
Associated Stakeholder: Santa Cruz County
Status: Existing
Mapped to Entity: Information Service Provider

Santa Cruz Parking (City and Private)

Description: Parking lots/systems in the City of Santa Cruz
Associated Stakeholder: Santa Cruz Parking (City & Private)
Status: Planned
Mapped to Entity: Parking Management

SBtCOG Call Boxes

Description: San Benito County-area highway call boxes
Associated Stakeholder: Council of San Benito County Governments (SBtCOG)
Status: Existing
Mapped to Entity: Emergency Telecommunications System

SBtCOG Planning

Description: Transportation planning and data services for SBtCOG
Associated Stakeholder: Council of San Benito County Governments (SBtCOG)
Status: Existing
Mapped to Entity: Archived Data Management Subsystem

SBtCOG Smart Call Boxes

Description: San Benito County-area highway smart call boxes
Associated Stakeholder: Council of San Benito County Governments (SBtCOG)
Status: Planned
Mapped to Entity: Emergency Telecommunications System
Mapped to Entity: Remote Traveler Support
Mapped to Entity: Roadway Subsystem

SC Metro (Santa Cruz Metropolitan Transit District)

Description: Transit operations for Santa Cruz metro area
Associated Stakeholder: Santa Cruz Metropolitan Transit District (SC Metro)
Status: Existing
Mapped to Entity: Transit Management
Mapped to Entity: Transit Vehicle Subsystem
Mapped to Entity: Vehicle



SC Metro Fare Management System

Description: Planned passenger and fare management system for SC Metro
Associated Stakeholder: Santa Cruz Metropolitan Transit District (SC Metro)
Status: Planned
Mapped to Entity: Transit Management
Mapped to Entity: Transit Vehicle Subsystem

SC Metro Traveler Information System

Description: Planned Traveler Information System for SC Metro
Associated Stakeholder: Santa Cruz Metropolitan Transit District (SC Metro)
Status: Planned
Mapped to Entity: Information Service Provider
Mapped to Entity: Personal Information Access
Mapped to Entity: Remote Traveler Support

SCCRTC Call Boxes

Description: Santa Cruz County-area highway call boxes
Associated Stakeholder: Santa Cruz County Regional Transportation Commission (SCCRTC)
Status: Existing
Mapped to Entity: Emergency Telecommunications System

SCCRTC Planning

Description: Transportation planning and data services for SCRTC
Associated Stakeholder: Santa Cruz County Regional Transportation Commission (SCCRTC)
Status: Existing
Mapped to Entity: Archived Data Management Subsystem

SCCRTC Smart Call Boxes

Description: Santa Cruz County-area highway smart call boxes
Associated Stakeholder: Santa Cruz County Regional Transportation Commission (SCCRTC)
Status: Planned
Mapped to Entity: Emergency Telecommunications System
Mapped to Entity: Remote Traveler Support
Mapped to Entity: Roadway Subsystem

Seaside Signal System

Description: Synchronized signal system in the City of Seaside
Associated Stakeholder: City of Seaside
Status: Existing
Mapped to Entity: Roadway Subsystem
Mapped to Entity: Traffic Management

Soledad Signal System

Description: Synchronized signal system in the City of Soledad
Associated Stakeholder: City of Soledad
Status: Planned
Mapped to Entity: Roadway Subsystem
Mapped to Entity: Traffic Management

TAMC Call Boxes

Description: Monterey County-area highway call boxes
Associated Stakeholder: Transportation Agency for Monterey County (TAMC)
Status: Planned
Mapped to Entity: Emergency Telecommunications System



TAMC Freeway Service Patrol

Description: FSP services for Monterey County freeways

Associated Stakeholder: Transportation Agency for Monterey County (TAMC)

Status: Existing

Mapped to Entity: Emergency Management

Mapped to Entity: Emergency Vehicle Subsystem

Mapped to Entity: Roadway Subsystem

TAMC Planning

Description: Transportation planning and data services for TAMC

Associated Stakeholder: Transportation Agency for Monterey County (TAMC)

Status: Existing

Mapped to Entity: Archived Data Management Subsystem

TAMC Smart Call Boxes

Description: Monterey County-area highway smart call boxes

Associated Stakeholder: Transportation Agency for Monterey County (TAMC)

Status: Existing

Mapped to Entity: Emergency Telecommunications System

Mapped to Entity: Remote Traveler Support

Mapped to Entity: Roadway Subsystem



PROJECT ARCHITECTURE: CENTRAL COAST REGIONAL ITS PROJECTS

AMBAG Planning

Description: Transportation planning and data services for AMBAG (covering Santa Cruz, San Benito, and Monterey Counties)

Associated Stakeholder: Association of Monterey Bay Area Governments (AMBAG)

Status: Existing

Mapped to Entity: Archived Data Management Subsystem

Amtrak Next Train CMS

Description: Train arrival notification system at stations in Santa Barbara and San Luis Obispo Counties (Planned mid-term)

Associated Stakeholder: Amtrak

Status: Planned

Mapped to Entity: Roadway Subsystem

Amtrak/MetroLink Automated Ticketing

Description: Automated ticketing system between Amtrak and MetroLink trains in Santa Barbara and San Luis Obispo County stations (Planned mid-term)

Associated Stakeholder: Amtrak

Status: Planned

Mapped to Entity: Transit Management

Atascadero Transit Smart Card

Description: Transit Smart Card for use on Atascadero Transit (Planned long-term)

Associated Stakeholder: Atascadero Transit

Status: Planned

Mapped to Entity: Transit Management

Mapped to Entity: Transit Vehicle Subsystem

Caltrans 1-800 ROAD Call-In System

Description: Current information regarding the condition of the California State Highway System (in State: 800-427-ROAD/out of State: 916-445-7623)

Associated Stakeholder: California Department of Transportation (Caltrans)

Status: Existing

Mapped to Entity: Information Service Provider

Caltrans D4 CCTV

Description: Caltrans District 4 CCTV cameras

Associated Stakeholder: Caltrans D4

Status: Existing

Mapped to Entity: Roadway Subsystem

Caltrans D4 CMS

Description: Caltrans District 4 Changeable Message Signs

Associated Stakeholder: Caltrans D4

Status: Existing

Mapped to Entity: Roadway Subsystem



Caltrans D4 HAR

Description: Caltrans District 4 Highway Advisory Radio

Associated Stakeholder: Caltrans D4

Status: Existing

Mapped to Entity: Remote Traveler Support

Mapped to Entity: Roadway Subsystem

Caltrans D4 TMC

Description: Transportation Management Center for Caltrans District 4 located in the San Francisco Bay area; also backs up the District 5 TMC

Associated Stakeholder: Caltrans D4

Status: Existing

Mapped to Entity: Emergency Management

Mapped to Entity: Traffic Management

Caltrans D4 Traffic Monitoring Stations

Description: Caltrans District 4 roadway vehicle detection

Associated Stakeholder: Caltrans D4

Status: Existing

Mapped to Entity: Roadway Subsystem

Caltrans D5 (Portable) HAR

Description: Portable HAR system for Caltrans District 5

Associated Stakeholder: Caltrans D5

Status: Existing

Mapped to Entity: Roadway Subsystem

Caltrans D5 CCTV

Description: Caltrans District 5 CCTV cameras; images also go to District 4 TMC.

Associated Stakeholder: Caltrans D5

Status: Existing

Mapped to Entity: Roadway Subsystem

Caltrans D5 CMS

Description: Caltrans District 5 Changeable Message Signs

Associated Stakeholder: Caltrans D5

Status: Existing

Mapped to Entity: Roadway Subsystem

Caltrans D5 HRI

Description: Highway/rail intersections in Caltrans District 5

Associated Stakeholder: Caltrans D5

Status: Planned

Mapped to Entity: Roadway Subsystem

Mapped to Entity: Traffic Management

Caltrans D5 Ramp Meters

Description: Freeway ramp meters in Caltrans District 5

Associated Stakeholder: Caltrans D5

Status: Existing

Mapped to Entity: Roadway Subsystem



Caltrans D5 RWIS

Description: Caltrans District 5 Road Weather Information System

Associated Stakeholder: Caltrans D5

Status: Planned

Mapped to Entity: Information Service Provider

Mapped to Entity: Maintenance and Construction Management

Mapped to Entity: Roadway Subsystem

Caltrans D5 Signal System

Description: Caltrans D5 arterial signal system with synchronized signals & smart corridor

Associated Stakeholder: Caltrans D5

Status: Existing

Mapped to Entity: Roadway Subsystem

Mapped to Entity: Traffic Management

Caltrans D5 Smart Call Boxes

Description: Smart call boxes in Caltrans District 5

Associated Stakeholder: Caltrans D5

Status: Planned

Mapped to Entity: Emergency Telecommunications System

Mapped to Entity: Remote Traveler Support

Mapped to Entity: Roadway Subsystem

Caltrans D5 TMC

Description: Transportation Management Center for Caltrans District 5; located in San Luis Obispo. Planned joint operations w/ CHP

Associated Stakeholder: Caltrans D5

Status: Existing

Mapped to Entity: Emergency Management

Mapped to Entity: Traffic Management

Caltrans D5 Traffic Monitoring Stations

Description: Caltrans District 5 roadway vehicle detection

Associated Stakeholder: Caltrans D5

Status: Existing

Mapped to Entity: Roadway Subsystem

Caltrans Website

Description: Includes incidents, lane closures, etc. (<http://www.dot.ca.gov/cgi-bin/roads.cgi>)

Associated Stakeholder: California Department of Transportation (Caltrans)

Status: Existing

Mapped to Entity: Information Service Provider

CHP CAD

Description: Dispatch system for CHP in TMCs

Associated Stakeholder: California Highway Patrol (CHP)

Status: Existing

Mapped to Entity: Emergency Management

CHP Website

Description: Provides incident information on State roads and highways (<http://cad.chp.ca.gov/>)

Associated Stakeholder: California Highway Patrol (CHP)

Status: Existing

Mapped to Entity: Information Service Provider



Dial-A-Ride Operators (Central Coast)

Description: On-demand transit services for the Central Coast Region

Associated Stakeholder: Dial-A-Ride-Operators (Central Coast)

Status: Existing

Mapped to Entity: Emergency Management

Mapped to Entity: Transit Management

Mapped to Entity: Transit Vehicle Subsystem

Monterey County Freeway Service Patrol

Description: Freeway service patrol for Monterey County-area highways

Associated Stakeholder: Monterey County

Status: Existing

Mapped to Entity: Emergency Management

PRCATS Smart Cards

Description: Transit Smart Card for use on PRCATS (Planned long-term)

Associated Stakeholder: Paso Robles City Area Transit Service (PRCATS)

Status: Planned

Mapped to Entity: Transit Management

Mapped to Entity: Transit Vehicle Subsystem

Santa Barbara County TMC

Description: Traffic Management Center for Santa Barbara County

Associated Stakeholder: Santa Barbara County

Status: Existing

Mapped to Entity: Traffic Management

Santa Barbara Metropolitan Transit District (SBMTD)

Description: Transit operations for the Santa Barbara metro area

Associated Stakeholder: Santa Barbara Metropolitan Transit District (SBMTD)

Status: Existing

Mapped to Entity: Transit Management

Mapped to Entity: Transit Vehicle Subsystem

Mapped to Entity: Vehicle

Santa Cruz County Freeway Service Patrol

Description: Freeway service patrol for Santa Cruz County-area highways

Associated Stakeholder: Santa Cruz County

Status: Existing

Mapped to Entity: Emergency Management

Mapped to Entity: Emergency Vehicle Subsystem

Mapped to Entity: Roadway Subsystem

SBCAG Freeway Service Patrol

Description: CHP-dispatched FSP for SB-area freeways

Associated Stakeholder: Santa Barbara County Association of Governments (SBCAG)

Status: Existing

Mapped to Entity: Emergency Management

Mapped to Entity: Emergency Vehicle Subsystem

SBCAG Planning

Description: Transportation planning and data services for SBCAG

Associated Stakeholder: Santa Barbara County Association of Governments (SBCAG)

Status: Existing

Mapped to Entity: Archived Data Management Subsystem



SBCAG Smart Card

Description: Transit Smart Card for use on Clean Air Express/Vista transit systems
Associated Stakeholder: Santa Barbara County Association of Governments (SBCAG)
Status: Existing
Mapped to Entity: Transit Management
Mapped to Entity: Transit Vehicle Subsystem

SBtCOG Planning

Description: Transportation planning and data services for SBtCOG
Associated Stakeholder: Council of San Benito County Governments (SBtCOG)
Status: Existing
Mapped to Entity: Archived Data Management Subsystem

SC Metro (Santa Cruz Metropolitan Transit District)

Description: Transit operations for Santa Cruz metro area
Associated Stakeholder: Santa Cruz Metropolitan Transit District (SC Metro)
Status: Existing
Mapped to Entity: Transit Management
Mapped to Entity: Transit Vehicle Subsystem
Mapped to Entity: Vehicle

SCAT Smart Card

Description: Transit Smart Card for use on SCAT (Planned mid-term)
Associated Stakeholder: South County Area Transit (SCAT)
Status: Planned
Mapped to Entity: Transit Management
Mapped to Entity: Transit Vehicle Subsystem

SCCRTC Freeway Service Patrol

Description: Freeway service patrol for Santa Cruz-area freeways
Associated Stakeholder: Santa Cruz County Regional Transportation Commission (SCCRTC)
Status: Existing
Mapped to Entity: Emergency Management

SCCRTC Planning

Description: Transportation planning and data services for SCRTTC
Associated Stakeholder: Santa Cruz County Regional Transportation Commission (SCCRTC)
Status: Existing
Mapped to Entity: Archived Data Management Subsystem

SLO Transit Smart Card

Description: Transit Smart Card for use on SLO Transit (Planned mid-term)
Associated Stakeholder: San Luis Obispo Transit (SLO Transit)
Status: Planned
Mapped to Entity: Transit Management
Mapped to Entity: Transit Vehicle Subsystem

SLOCOG Planning

Description: Transportation planning and data services for SLOCOG
Associated Stakeholder: San Luis Obispo Council of Governments (SLOCOG)
Status: Existing
Mapped to Entity: Archived Data Management Subsystem



SLORTA Smart Card

Description: Transit Smart Card for use on SLORTA (Planned mid-term)
Associated Stakeholder: San Luis Obispo Regional Transit Authority (SLORTA)
Status: Planned
Mapped to Entity: Transit Vehicle Subsystem
Mapped to Entity: Vehicle

SLORTA Transit (RTA)

Description: San Luis Obispo Countywide transit
Associated Stakeholder: San Luis Obispo Regional Transit Authority (SLORTA)
Status: Existing
Mapped to Entity: Transit Management
Mapped to Entity: Transit Vehicle Subsystem
Mapped to Entity: Vehicle

SMAT Smart Card

Description: Transit Smart Card for use on SMAT
Associated Stakeholder: Santa Maria Area Transit (SMAT)
Status: Existing
Mapped to Entity: Transit Management
Mapped to Entity: Transit Vehicle Subsystem

TAMC Freeway Service Patrol

Description: FSP services for Monterey County freeways
Associated Stakeholder: Transportation Agency for Monterey County (TAMC)
Status: Existing
Mapped to Entity: Emergency Management
Mapped to Entity: Emergency Vehicle Subsystem
Mapped to Entity: Roadway Subsystem

TAMC Planning

Description: Transportation planning and data services for TAMC
Associated Stakeholder: Transportation Agency for Monterey County (TAMC)
Status: Existing
Mapped to Entity: Archived Data Management Subsystem

UCSB Smart Card

Description: UCSB Smart Card for Parking Program
Associated Stakeholder: UCSB
Status: Existing
Mapped to Entity: Parking Management