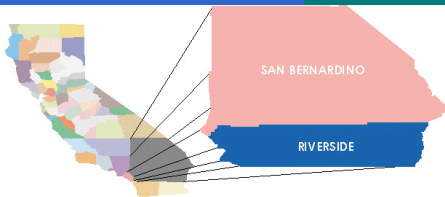


Workshop #1

Inland Empire Regional ITS Architecture Project

February 5, 2003



Agenda

- Introductions
- Project Background
- Study Boundaries
- Stakeholder List Review
- ITS Inventory Update
- ITS Needs
- Web Site Introduction
- Next Meeting/Calendar Review

Project Background

What is ITS?

Intelligent Transportation Systems

**Uses electronics,
communications, and computers
in an integrated manner to
improve the efficiency and safety
of roadways.**



What is ITS?



**Roadway
Mgmt**



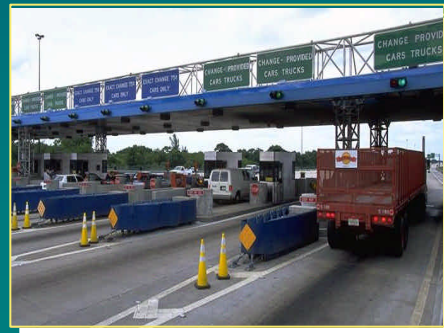
**Traveler
info**



**Rural
Systems**



**Vehicle
Control**



**Electronic
Tolls**



**Goods
Movement**



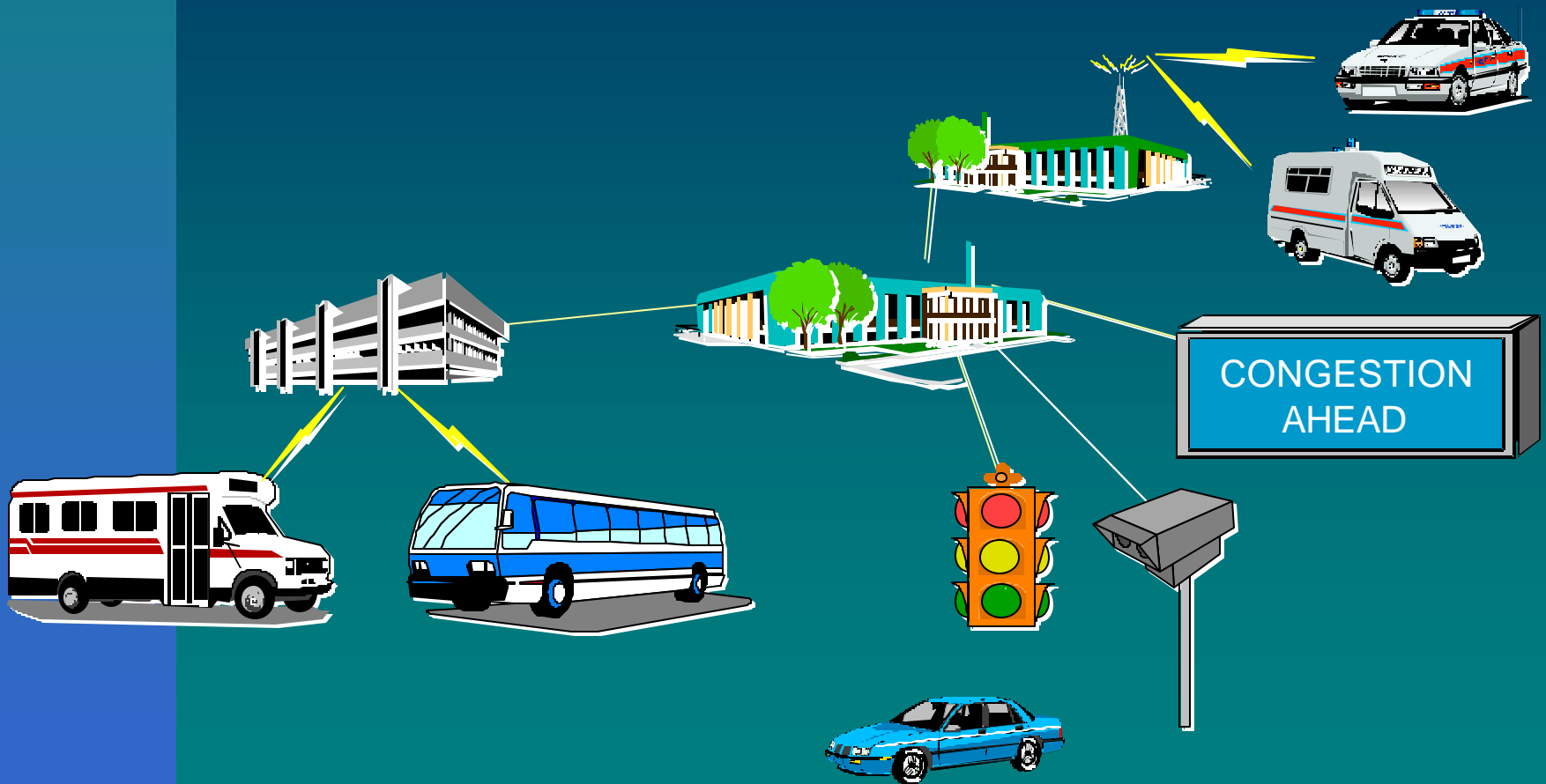
**Transit
Systems**



What is a Regional ITS Architecture?

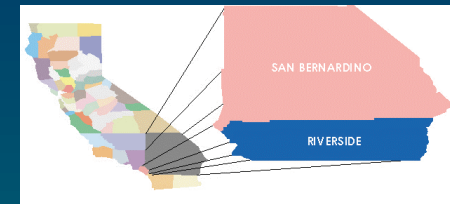
- Provides a structured framework for deployment and integration.
- Helps to introduce and interconnect ITS services across the region.
- Identifies “gaps” in systems and services.
- Assists in the development of cooperative agreements.

What is a Regional ITS Architecture?



What does a Regional ITS Architecture include?

- Description of the Region
- List of Stakeholders
- Current and Future ITS Elements
- Information Exchange between the ITS Elements
- Operational Concept for the ITS Services
- Functions of each of the ITS Elements
- Applicable ITS Standards
- Project Sequencing
- List of Agreements



What isn't included?

- Selection of Specific Technologies or Designs
- Inventory Counts of Devices/ Elements
- Confirmation that Projects will be Funded

Why this project, why now?

- FHWA published a Rule (*ITS Standards and Architecture*) and FTA published a companion Policy to foster regional integration by requiring that all ITS projects funded from the Highway Trust Fund be in conformance with the National ITS Architecture and appropriate standards.
- “Conformance” is defined as using the National ITS Architecture to develop a regional ITS architecture tailored to address the local situation and ITS investment needs, and the subsequent adherence of ITS projects to the regional ITS architecture.
- The Inland Empire ITS Strategic Plan preceded the Rule/Policy and is, therefore, in need of modifications in order for the region to continue on a path to conformance.
- Critical date for completion is April 2005.



Project Objective

*Develop an ITS architecture
that is useful to the region
and in conformance
with FHWA/FTA guidelines.*

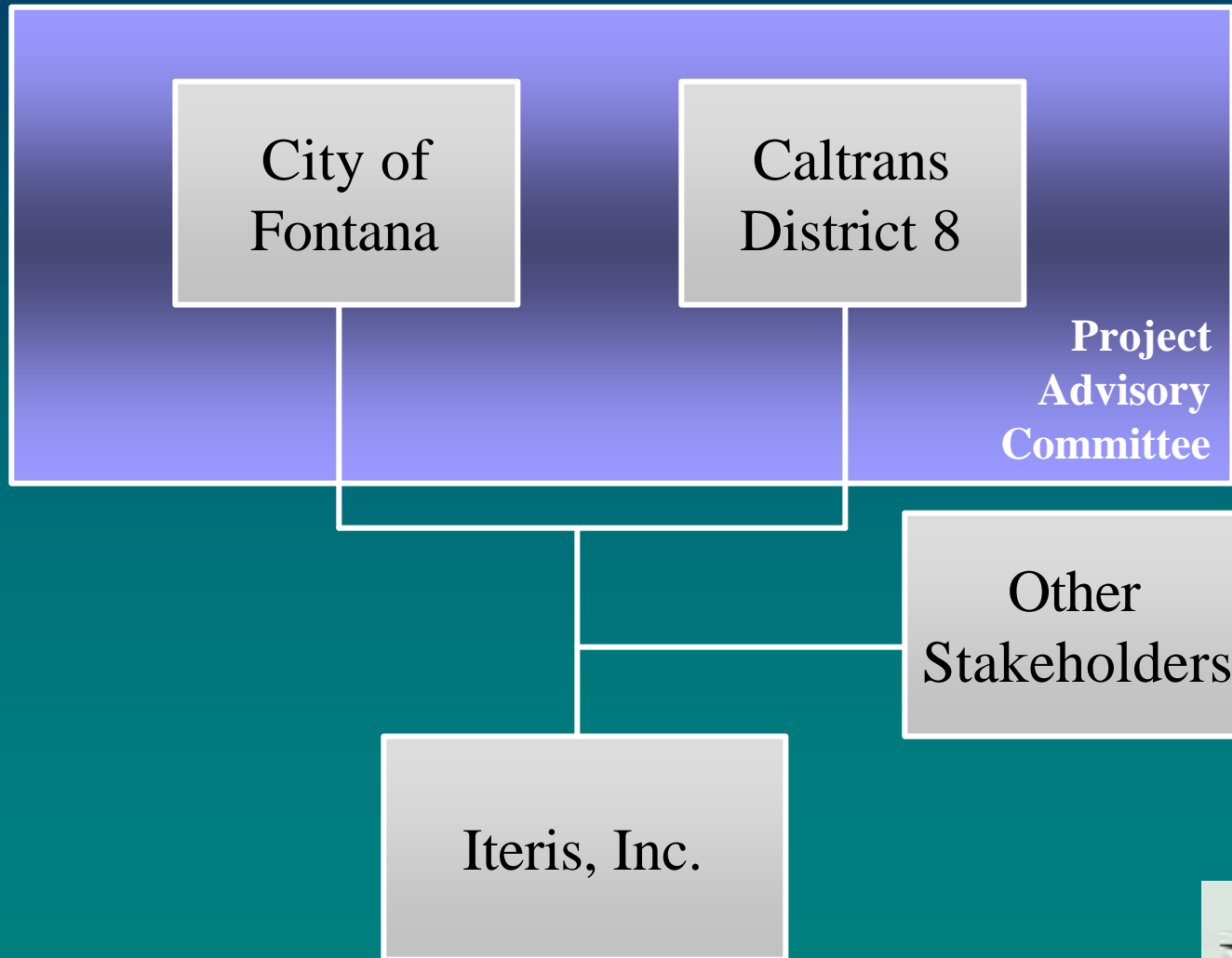
Project Work Scope

Task 1	Project Management
Task 2	Develop Steering Committee and Identify Stakeholders
Task 3	Define Region and Update ITS Inventory
Task 4	Determine Needs, Services, and Operational Concepts
Task 5	Analyze Functional Requirements and Define Interfaces
Task 6	Develop Project Sequencing
Task 7	Develop List of Agency Agreements
Task 8	Develop Maintenance Plan
Task 9	Produce Final Report

Project Work Scope

Task 1	Project Management
Task 2	Develop Steering Committee and Identify Stakeholders
Task 3	Define Region and Update ITS Inventory
Task 4	Determine Needs, Services, and Operational Concepts
Task 5	Analyze Functional Requirements and Define Interfaces
Task 6	Develop Project Sequencing
Task 7	Develop List of Agency Agreements
Task 8	Develop Maintenance Plan
Task 9	Produce Final Report

Roles & Responsibilities



Roles and Responsibilities

- **Project Advisory Committee**
 - Members = Caltrans D8, FHWA, RCTC, SANBAG, and Fontana
 - Duties = Perform project and consultant oversight
- **Stakeholders**
 - Members = All Inland Empire entities with responsibility/interest in transportation
 - Duties = respond to inquiries, participate in workshops, review deliverables, access website

Study Boundaries

Region Definition

- Use existing metropolitan planning area
- Include cities, counties, corridors
- Note adjacent states, if any
- Special conformity areas, such as for air quality
- Other interfacing ITS architectures

Map Review

Stakeholder List Review

Candidate Stakeholders

- Transportation Agencies
- Transit Agencies
- Planning Organizations
- Public Safety Agencies
- Activity Centers
- Fleet Operators
- Other....

Candidate Stakeholders

- Other....
 - Media/Traffic Reporting Services
 - National Park Service/Forestry Service
 - Air Quality Management
 - Universities
 - Weather Services
 - Others?

Stakeholder List Review

ITS Inventory Update

ITS Inventory

- Include Existing and Planned ITS
- Focus on “Centers”
- Collect System Name, Associated Stakeholder(s), Description, Status, Field Element Types, External Data Exchange Interfaces

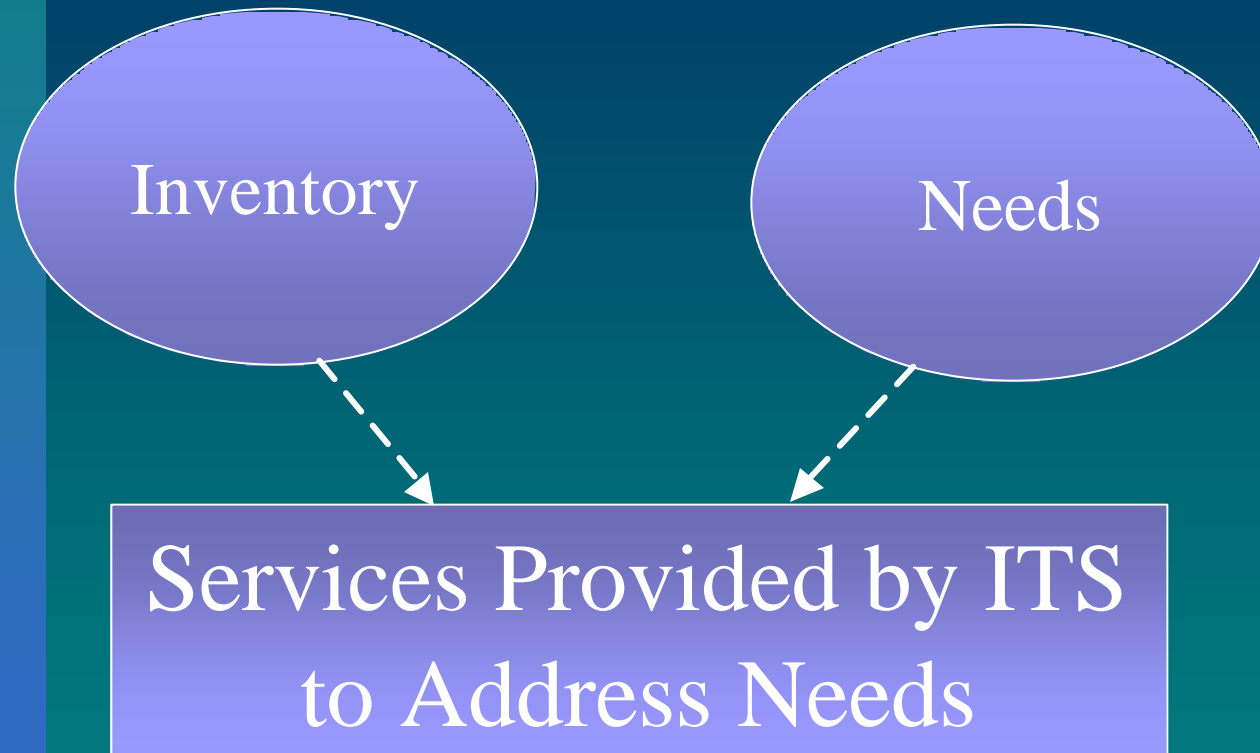
ITS Inventory

- Existing systems appear to map to the following National ITS Subsystems:
 - Centers: Traffic Management, Emergency Management, Transit Management, and Information Service Provider
 - Roadside: Roadway
 - Vehicles: Emergency Vehicles and Transit Vehicles
 - Travelers: Personal Information Access

Inventory Review

ITS Needs

Needs Analysis



First Step in Determining What the Systems Should Do Tomorrow That They Don't Do Today

Needs Analysis

- Needs Previously Documented in Strategic Plan, such as:
 - Increasing Congestion
 - Lack of Traveler Information
 - Lack of Real-Time Traffic Info
 - Transit Service Coordination

Needs Analysis

- Representative List of Candidate Needs
- Example:
 - “Alleviate congestion in work zones, freeway interchanges, and in downtown areas” vs. “Alleviate traffic congestion”
- Focus of Next Workshop

Web Site Introduction

Web Site Contents

- Home (purpose, what's new, navigation, for further info)
- Background
- Deliverables
- Meetings
- Miscellaneous
- Contacts
- Links

Deliverables

- Because of the expedited nature of the schedule, deliverables will be delivered in draft form only.
- Stakeholder comments will be dispositioned and released, but the deliverable will not be revised and re-circulated.
- The dispositioned stakeholder comments will be reflected in the Final Project Report.

Web Site URL

www.iteris.com/inlandempire-its



Next Meeting/Calendar Review

Project Schedule

ID	Task Name	Start	Finish	December	January	February	March	April	May	June	July
				Dec	Jan	Feb	Mar	Apr	May	Jun	Jul
1	Project Management	Tue 12/12/03	Mon 04/28/04	[Gantt bar]							
2	Project Management Plan	Tue 12/12/03	Fri 01/10/04	[Gantt bar]							
3	Monthly Status Meetings	Tue 12/12/03	Mon 05/04/04	[Gantt bar]							
4	Develop Steering Committee and Identify Stakeholders	Mon 01/19/04	Fri 01/15/04	[Gantt bar]							
5	Informational Flyer	Mon 01/05/04	Fri 01/24/04	[Gantt bar]							
6	Project Web Site	Mon 01/05/04	Fri 01/31/04	[Gantt bar]							
7	Task Workstop	Tue 01/21/04	Tue 01/21/04	[Gantt bar]							
8	Stakeholder List	Mon 01/05/04	Fri 01/24/04	[Gantt bar]							
9	Define Region and Update ITS Inventory	Mon 01/19/04	Fri 02/07/04	[Gantt bar]							
10	Task Workstop	Tue 01/21/04	Tue 01/21/04	[Gantt bar]							
11	Draft ITS Inventory Report	Mon 01/13/04	Fri 02/14/04	[Gantt bar]							
12	Stakeholder Review	Mon 02/17/04	Fri 02/26/04	[Gantt bar]							
13	Comment Disposition	Mon 03/03/04	Fri 03/07/04	[Gantt bar]							
14	Determine Needs, Services, and Operational Concepts	Mon 01/19/04	Fri 02/07/04	[Gantt bar]							
15	Draft Needs, Services, and Operational Concepts Report	Mon 01/26/04	Fri 02/26/04	[Gantt bar]							
16	Task Workstop	Tue 03/04/04	Tue 03/04/04	[Gantt bar]							
17	Stakeholder Review	Mon 03/03/04	Fri 03/14/04	[Gantt bar]							
18	Comment Disposition	Mon 03/17/04	Fri 03/21/04	[Gantt bar]							
19	Analyze Functional Requirements and Define Interfaces	Mon 02/24/04	Fri 04/04/04	[Gantt bar]							
20	Draft Functional Requirements and Interface Report	Mon 02/24/04	Fri 04/04/04	[Gantt bar]							
21	Task Workstop	Tue 04/06/04	Tue 04/06/04	[Gantt bar]							
22	Stakeholder Review	Wed 04/07/04	Fri 04/16/04	[Gantt bar]							
23	Comment Disposition	Mon 04/21/04	Fri 04/25/04	[Gantt bar]							
24	Develop Project Sequencing	Mon 03/24/04	Fri 05/14/04	[Gantt bar]							
25	Task Workstop	Tue 05/01/04	Tue 05/01/04	[Gantt bar]							
26	Draft Project Sequencing Report	Mon 03/24/04	Fri 04/25/04	[Gantt bar]							
27	Stakeholder Review	Mon 04/26/04	Fri 05/08/04	[Gantt bar]							
28	Comment Disposition	Mon 05/12/04	Fri 05/15/04	[Gantt bar]							
29	Develop List of Agency Agreements	Mon 04/14/04	Fri 05/20/04	[Gantt bar]							
30	Draft List of Agency Agreements	Mon 04/14/04	Fri 05/08/04	[Gantt bar]							
31	Stakeholder Review	Mon 05/12/04	Fri 05/23/04	[Gantt bar]							
32	Comment Disposition	Mon 05/25/04	Fri 05/30/04	[Gantt bar]							
33	Develop Maintenance Plan	Mon 04/21/04	Fri 06/06/04	[Gantt bar]							
34	Draft Maintenance Plan	Mon 04/21/04	Fri 05/15/04	[Gantt bar]							
35	Stakeholder Review	Mon 05/19/04	Fri 05/30/04	[Gantt bar]							
36	Comment Disposition	Mon 05/24/04	Fri 05/05/04	[Gantt bar]							
37	Produce Final Report	Mon 05/12/04	Fri 06/27/04	[Gantt bar]							
38	Draft Final Project Report	Mon 05/12/04	Fri 05/05/04	[Gantt bar]							
39	Task Workstop	Tue 05/10/04	Tue 05/10/04	[Gantt bar]							
40	Stakeholder Review	Wed 05/11/04	Fri 05/20/04	[Gantt bar]							
41	Comment Disposition	Mon 05/24/04	Tue 05/25/04	[Gantt bar]							
42	Final Project Report	Fri 05/27/04	Fri 05/27/04	[Gantt bar]							

Workshop Calendar

Workshop #1: Stakeholders/Inventory	February 5
Workshop #2: Needs/Services	March 4
Workshop #3: Interfaces	April 8
Workshop #4: Project Sequencing	May 6
Workshop #5: Project Results	June 10



Upcoming Deliverables

- Draft Inventory Report
 - February 14

Workshop #1

Inland Empire Regional ITS Architecture Project

February 5, 2003

