

*SE Nebraska Regional
ITS Architecture
Stakeholder Outreach*

Presented by
ITERIS

In association with
Olsson Associates

November 4, 2004



Agenda

- ▶ *Opening Remarks*
- ▶ *What is ITS?*
- ▶ *What is Regional ITS Architecture?*
- ▶ *About the SE Nebraska Project*
 - *Goals and objectives*
 - *Scope of work*
 - *Project outcomes*
 - *Current status*
- ▶ *How could you participate?*
- ▶ *Summary and discussion*



The Problem



- 40,000 People Killed Annually in U.S. Traffic Accidents
- Traffic Increasing 20 Times Faster Than New Roads Being Built
- Economic Impact: \$220 Billion



The Solution!

Intelligent Transportation Systems

Use of technology to improve the efficiency and safety of our transportation systems

...Includes both Technical and Institutional attributes



What is ITS?



Roadway
Mgmt



Traveler
info



Rural
Systems



Goods
Movement



Emergency
Management



Transit
Systems



Maintenance



Travel and Traffic Management



Roadway Ops & Maintenance

- Information Dissemination
- Asset Management
- Work Zone Management



ITERIS

Road Weather Management

- Surveillance, Monitoring, and Forecasting
- Information Dissemination
- Traffic Control
- Response and Treatment



ITERIS

Commercial Vehicle Operations

- Fleet/Freight Administration
- Electronic Clearance
- Safety Assurance
- Electronic Screening
- Security Operations
- HAZMAT Management



Emergency Management Systems

- Emergency Medical Services
- Response and Recovery
- Hazardous Materials Management



Transit Management Systems

- Safety and Security
- Transit Demand Management
- Fleet Management
- Information Dissemination



Traveler Information Systems

- Pre-Trip Information
- En-route Information
- Tourism and Events



Nebraska Traveler Information



What is a Regional ITS Architecture?

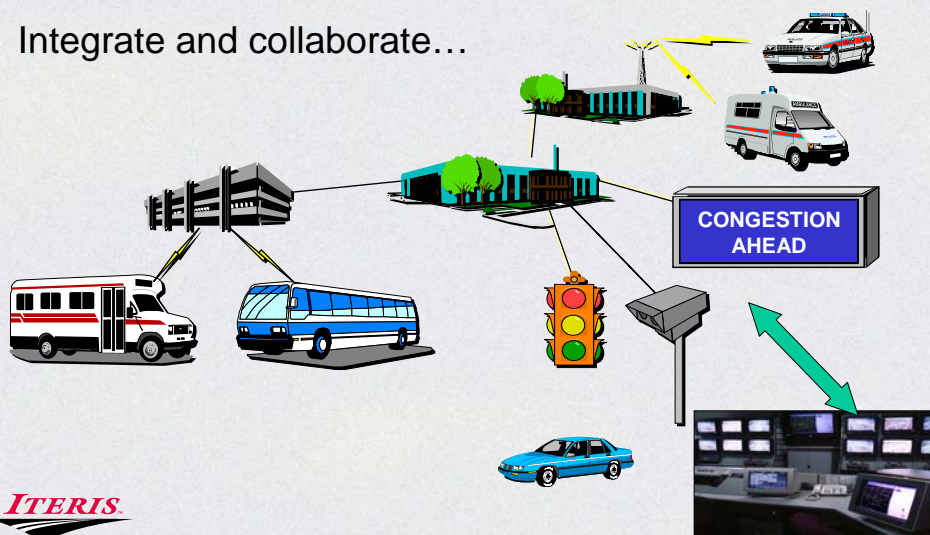
...Is a Framework to :

- Introduce and interconnect ITS services across the region.
- Identify "gaps" in systems and services for communications.
- Assist in the development of cooperative agreements between involved entities.



What is a Regional ITS Architecture?

Integrate and collaborate...



Why develop a Regional ITS Architecture?

- To define integration opportunities
- To provide for information sharing
- To efficiently structure implementations
- To prepare for future expansion
- To assist in estimating/leveraging funding
- To deploy consistent projects/systems
- To comply with Federal rule



What does a Regional ITS Architecture include?

- Description of the Region
- List of Stakeholders
- Current and Future ITS Elements
- Information Exchange between the ITS Elements
- Operational Concept for the ITS Services
- Functions of each of the ITS Elements
- Applicable ITS Standards
- Project Sequencing
- List of Agreements



What isn't included?

- Selection of Specific Technologies or Designs (technology neutral)
- Inventory Counts of Devices/ Elements (or location)
- Confirmation that Specific Projects will be Funded or Method for Funding.

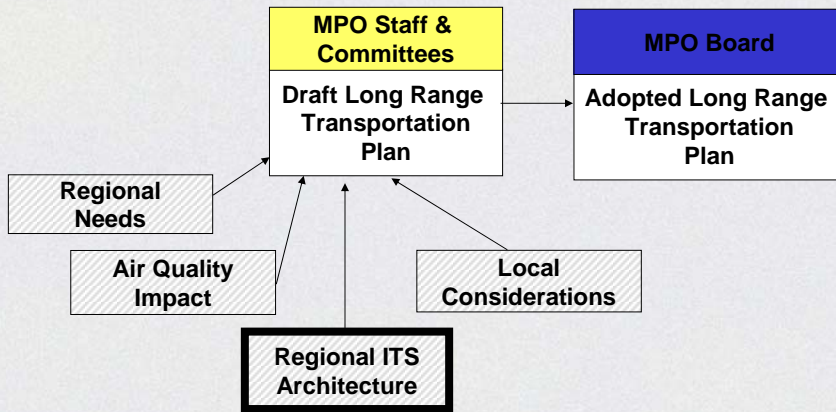


Application to Local Planning

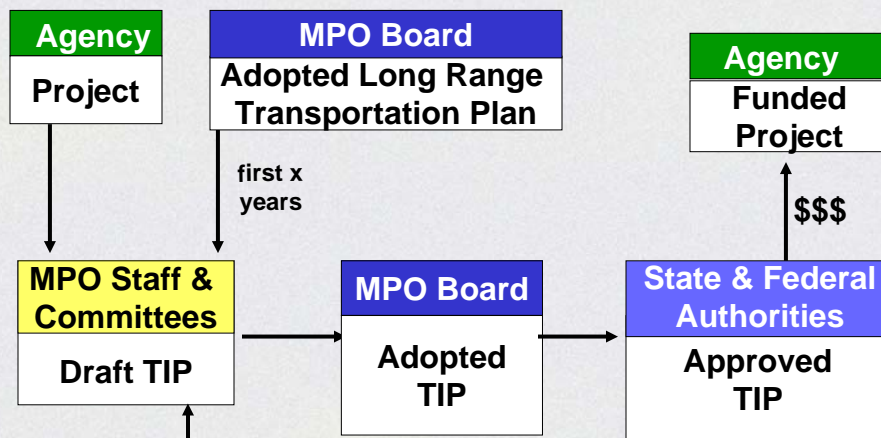
A Regional ITS Architecture supports development of the Regional Transportation Plan (RTP) and the Transportation Improvement Program/Plan (TIP/STIP).



Metropolitan Long Range Transportation Planning



Example : Transportation Improvement Program



SE Nebraska ITS Regional Architecture Project Goals and Objectives

Highlights:

- Improve the safety and efficiency of our roadways
- Provide enhanced and timely traveler information
- Enhance Transportation related services such as transit and emergency response
- Empower the travelers with reliable and accurate weather information, roadway conditions and information to make inform decisions about their trip



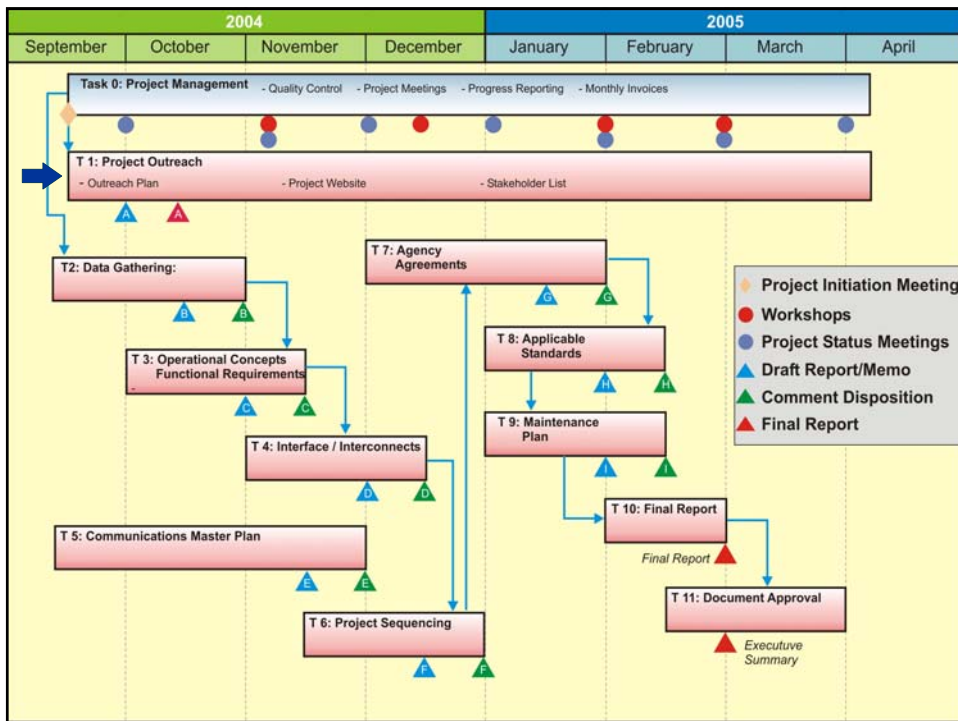
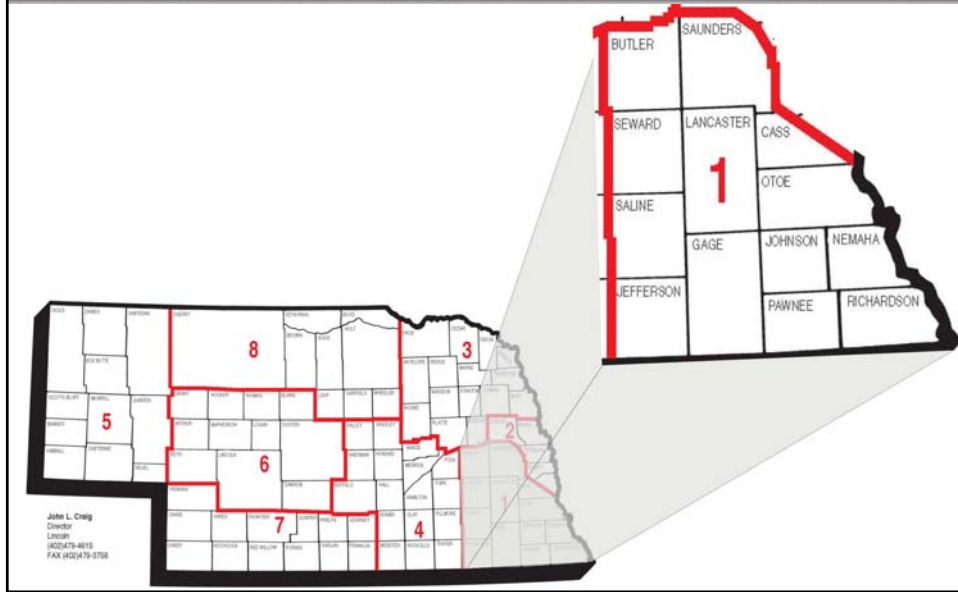
SE Nebraska ITS Regional Architecture Project Goals and Objectives

Highlights (continued):

- The Regional Architecture (RA) will address the importance of Public Information and Education relative to ITS
- The process should identify the roles and responsibilities of partnering agencies
- The RA will describe the interaction and interfaces among physical components and systems

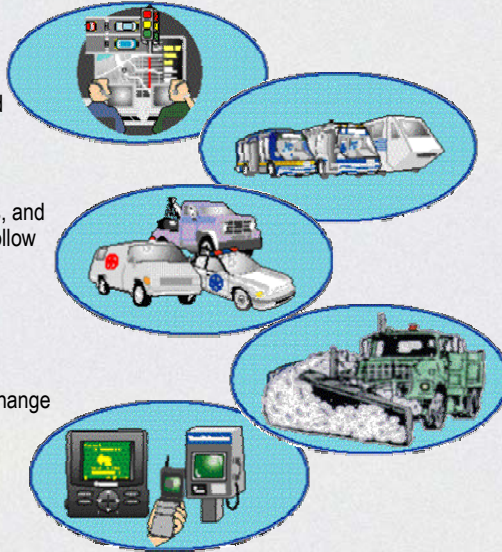


Project Study Area



Project Outcomes

- In Planning
 - Projects aligned with State and Federal funding requirements
- In Design
 - Technical guidelines, functions, and standards for ITS projects to follow
- In Procurement
 - RFP Specifications
- In Deployment
 - Ensures the ability of data exchange and system integration



Project Current Status

- System Inventory
 - Agencies
 - Technical and institutional elements
 - Database and mapping software – Turbo
- Communications
 - Importance of communication within the Architecture
 - Regional layout
- Southeast Nebraska Needs



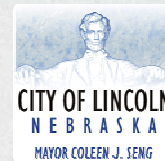
Inventory Plan

- Collection of system information
 - Existing (i.e., closed circuit television camera system)
 - Planned (i.e., automatic vehicle location for buses)
- Turbo Architecture for Information Flow Representation



Agencies

- Agencies information collected to date
 - City of Lincoln
 - Nebraska Department of Roads
 - Nebraska State Patrol
 - Star Tran
 - 911 centers
 - Other cities and counties



Existing Systems

- Emergency Management
 - Mobile command post
 - In-vehicle radio systems
 - Motorist Assist
- Public Transportation
 - Bus systems
 - Vehicle Location



Existing Systems

- Commercial Vehicle Operations
 - Weigh-in-motion
 - Oversize/overweight permitting
 - Pre-pass
- Construction and Maintenance



Inventory Tool

Turbo Architecture™

• Technical

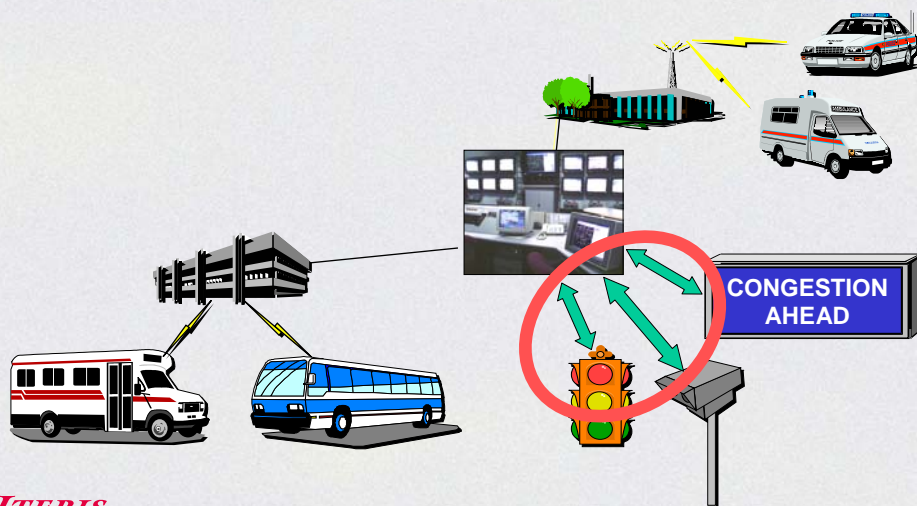
- Software tool that supports development of regional and project ITS architectures.
- Uses ITS inventory (existing and planned systems) as input
- Output includes reports, diagrams, and preliminary architecture

• Institutional

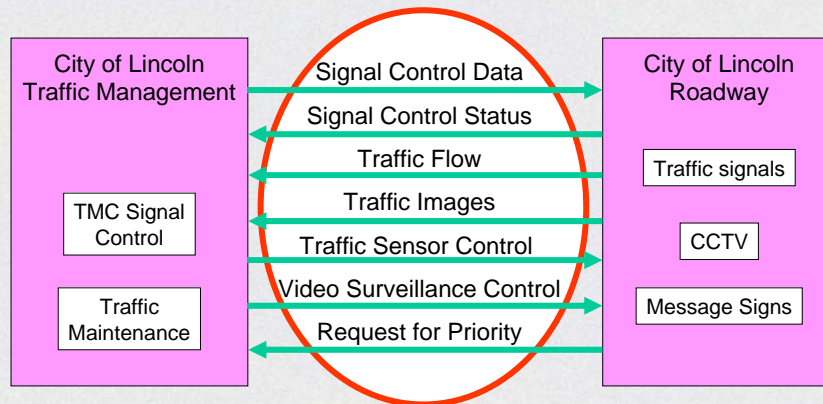
- Assists with the identification of agency roles and responsibilities
- Assists with the identification of likely agency agreements



Importance of Communication System



Importance of Communication System



Communications Master Plan

The Objective:

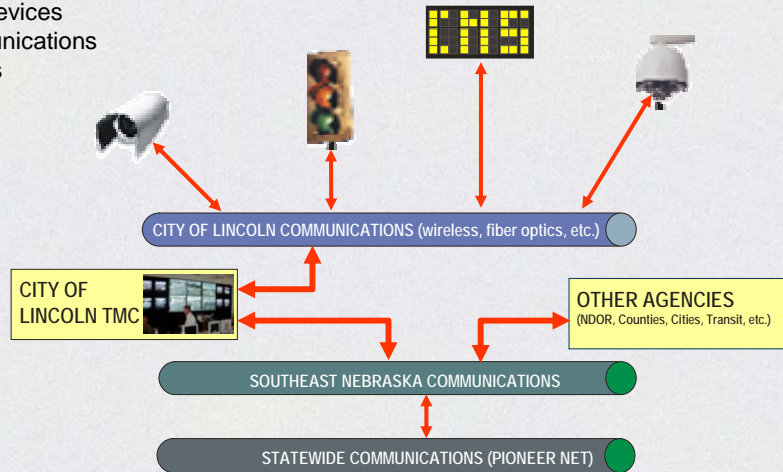
- Consistent with Statewide Strategic Plan
- Ability to share information agency-to-agency
- Maintain common standards to assist with the sharing of information
- Make use of existing systems where possible
- Communicate with ITS elements deployed throughout the area



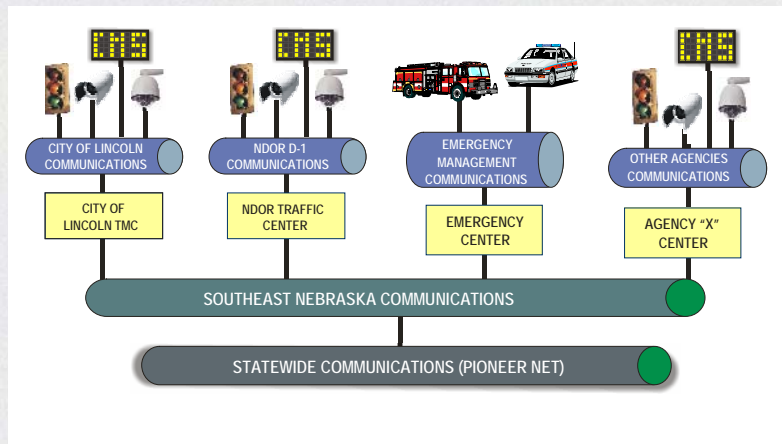
Communications

How does it work?

- Field Devices
- Communications
- Centers



Regional System



Communications Master Plan

- Serves as the backbone for the deployment of ITS throughout the region
- Provides the means for engineers to control and operate the field elements
- Provides a connection between centers for data sharing



How Can You Participate?

- Identify needs...and desired services
- Share your thoughts and ideas
- Visit our website and provide comments on our draft documents
- Attend future workshops
- Contact information:
 - Mr. Virendra Singh - VSingh@ci.lincoln.ne.us - 441-7835
 - www.iteris.com/senearch



Future Key Milestones

- **Workshop 2 (December 16)** - how do the pieces fit together
 - Operational Concepts
 - Interfaces and Interconnects
- **Workshop 3 (January 27)** - how do we deploy them
 - Project Sequencing
 - Agency Agreements
- **Workshop 4 (March 3)** - results
 - Final Report
 - Maintenance of the Architecture

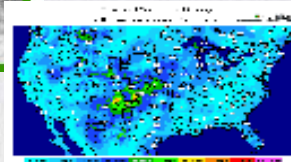


Summary and Discussion

- We are embarking on an effort that will provide a framework for innovative technical and institutional collaboration to improve the safety and mobility of our transportation systems.
- This is your plan and your participation is essential in this effort
- We would like to listen to you!



System Needs



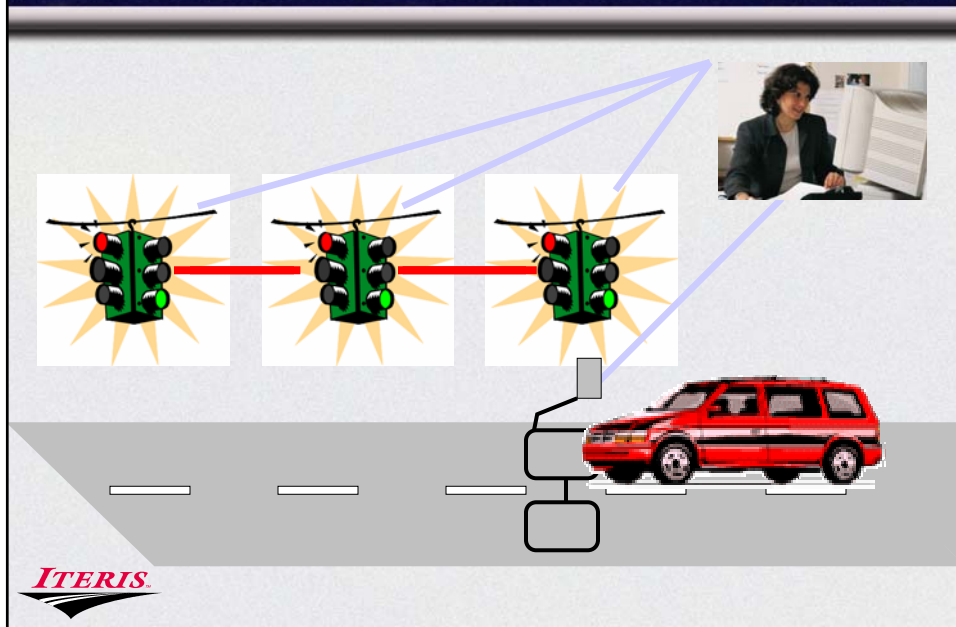
Wind Advisory







Weather Pattern



What do you need to Coordinate traffic signals?



**Please share your thoughts with us now!
and/ or**

-  **Note cards are available today**
-  **Visit the website**
-  **Attend future workshops**
-  **Review reports and comment**

Thank you for attending this workshop and have a great evening

