

Development of a Regional Intelligent Transportation System Architecture

Public Forum Overview

In cooperation with:

Wichita-Sedgwick County Metropolitan Area Planning Department

City of Wichita

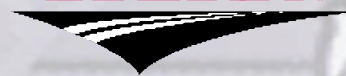
Sedgwick County

Kansas Department of Transportation

Federal Highway Administration

Presented by:

ITERISTM



In association with

RCC Consultants

March 10, 2005

Project Objectives

- Develop a **Regional ITS Architecture** for the Wichita-Sedgwick County region (**Volume 1**)
 - Integrating advanced technologies
- **Development of Implementation Plan (Volume 2)**
 - Planning of ITS projects
 - Regional project development
- **Development of Communications Plan (Volume 3)**
 - Identify Communications Resources
 - Analyze Communications Needs
 - Identify Network Architecture Options

What is ITS?



“ITS represents the application of information processing, communications technologies, advanced control strategies, and electronics to the field of transportation.”

23 CFR Parts 655 and 940



ITS Architecture

Structure or framework for deploying
Integrated Transportation Systems

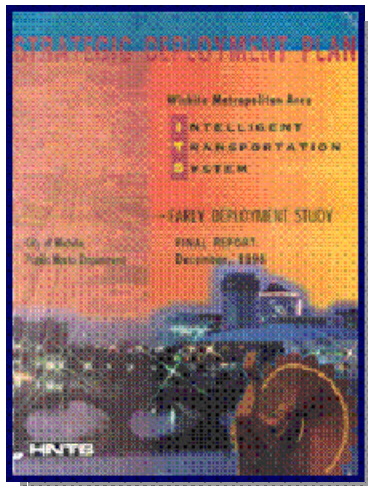
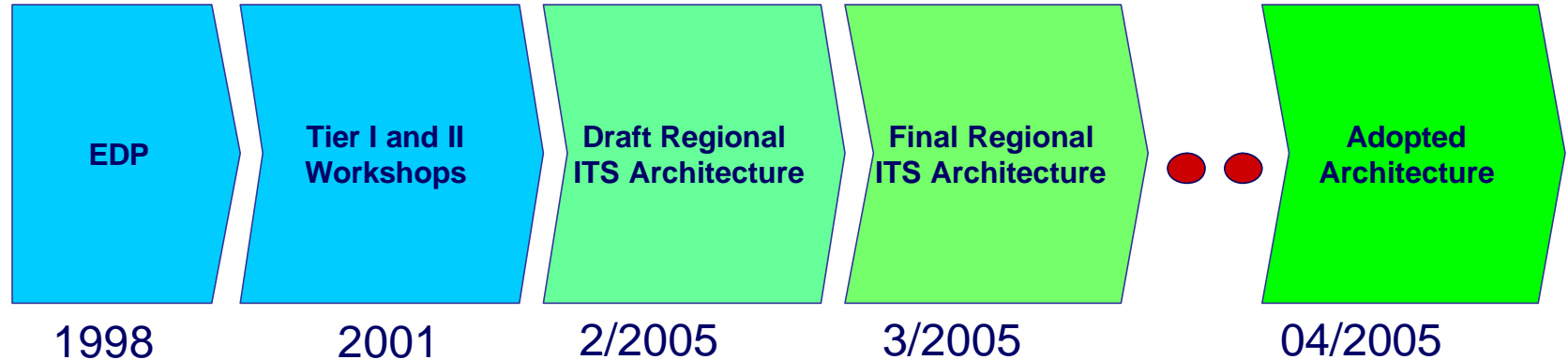
- blueprint for effective
cooperation



ITS Legislation

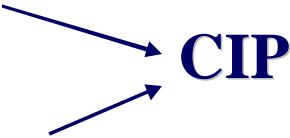
Section 520.6(e) of the Transportation Equity Act for the 21 Century (TEA-21) requires that all ITS projects funded through the Highway Trust Fund be in conformance with the National ITS Architecture and applicable standards

Wichita – Sedgwick County Regional ITS Architecture



Based on 1998 ITS Strategic
Deployment Plan and 2001
Regional ITS Architecture

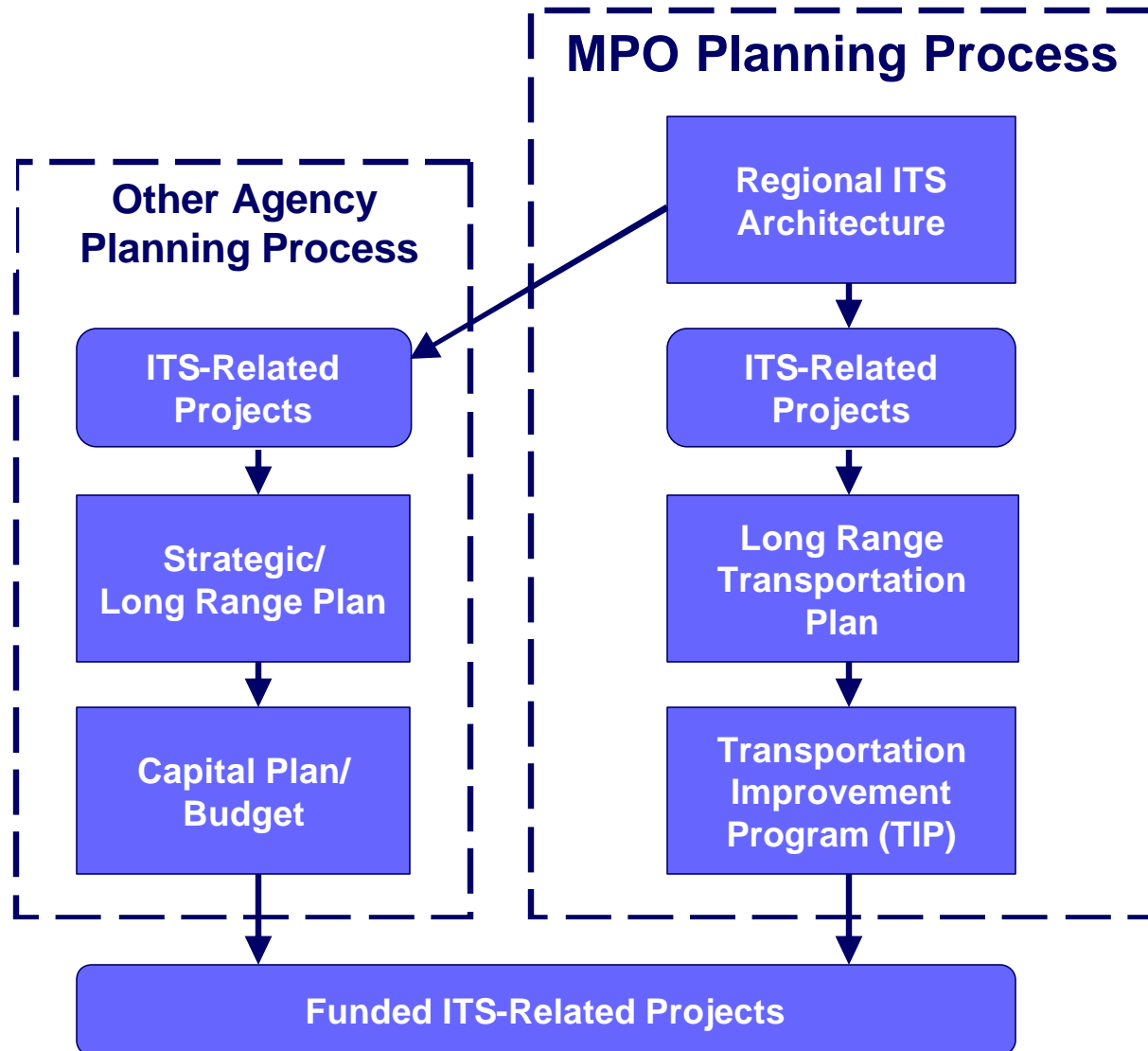
Partnering Memorandum of Understanding January 2002

- \$6.25 Million Total
 - \$3.75 Million (60%) KDOT
 - \$1.25 Million (20%) City of Wichita
 - \$1.25 Million (20%) Sedgwick County
- 
- CIP
- MAPD - lead local coordinating agency
 - Guiding Document – *Wichita Metropolitan Area ITS Strategic Development Plan*

Partnering Additional Federal Earmarks

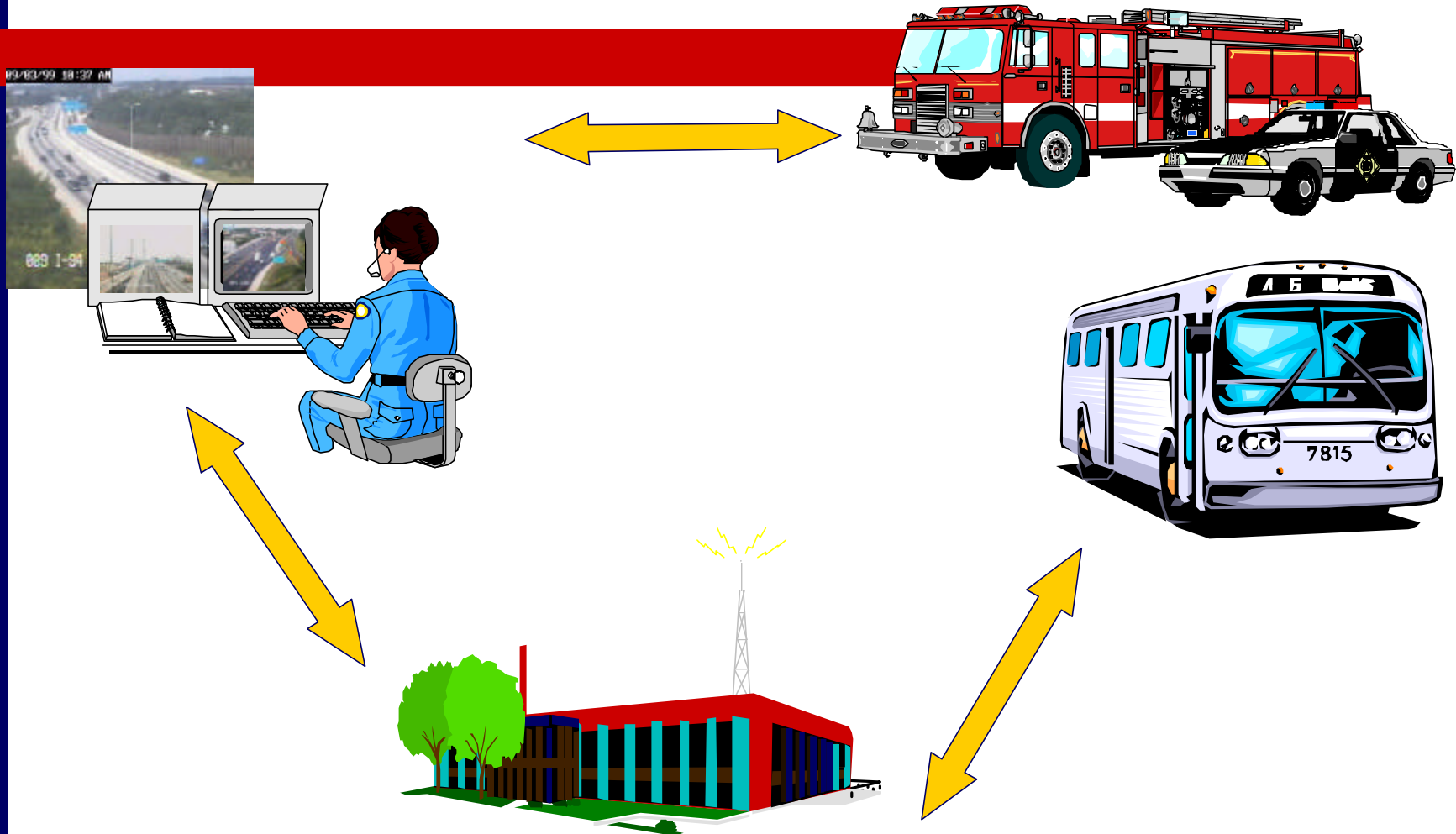
FY	Grant	Recipient
● 2002	\$1.00 Million	City of Wichita
● 2003	\$4.00 Million	MAPD
● 2004	\$0.75 Million	Wichita Transit
● 2005	\$1.25 Million	MAPD

ITS Planning Process

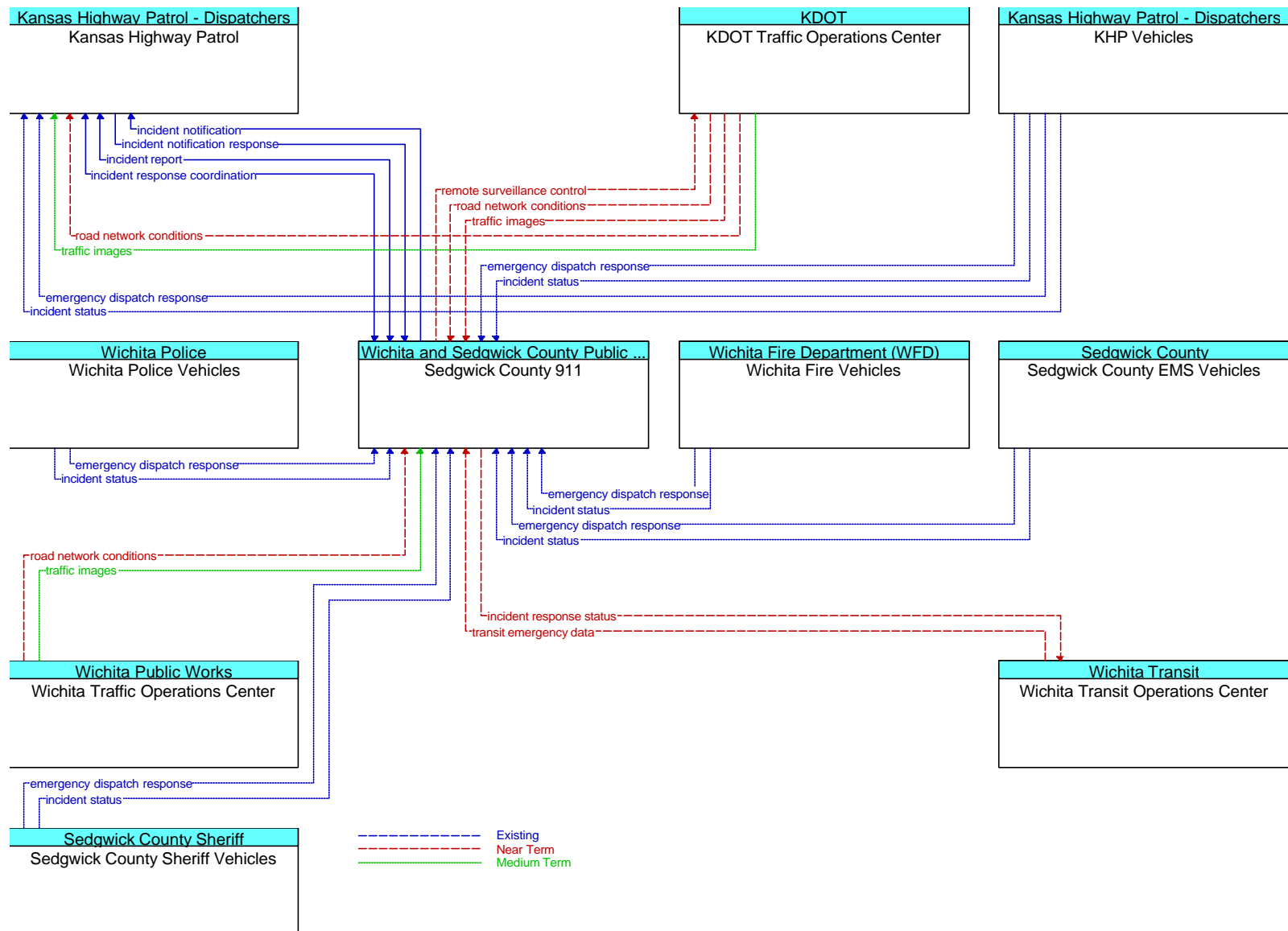


Partnering Projects

Sedgwick County AVL System



Emergency Call Taking and Dispatch



Partnering Projects

Traffic Signal System Upgrade

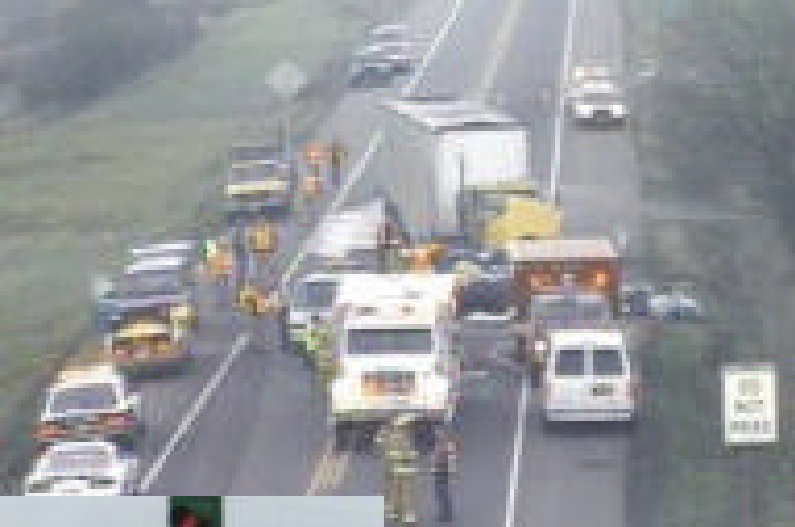


- Coordinated signals
 - City Wichita: 380 intersections
 - Sedgwick County: 35 intersections

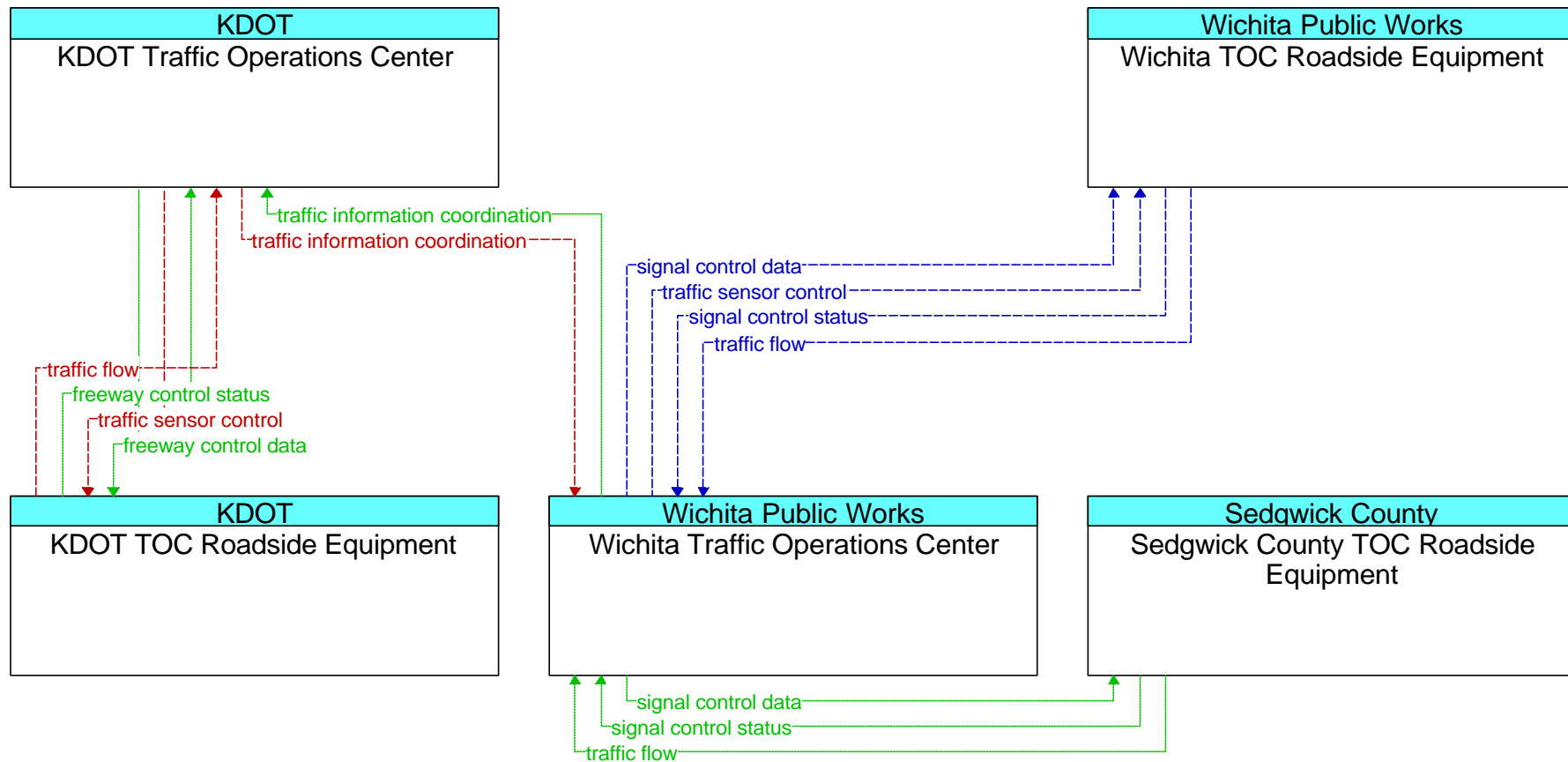


Partnering Projects Advanced Traffic Management System (ATMS)

- Incident response
 - Freeway diversion



Regional Traffic Control



Workshops

- Three Workshops to review and gather inputs
 - Architecture
 - Implementation Plan / Communications Plan
 - (2) Three-day Workshops
 - Two days for Detailed Review
 - One half-day for Management
 - (1) One-day workshop to finish Emergency Management Services
- MPO – Executive Overview
- MPO-sponsored Public Forum

Wichita Architecture Website

www.iteris.com/wichitaarchitecture

Home - Mozilla Firefox

File Edit View Go Bookmarks Tools Help

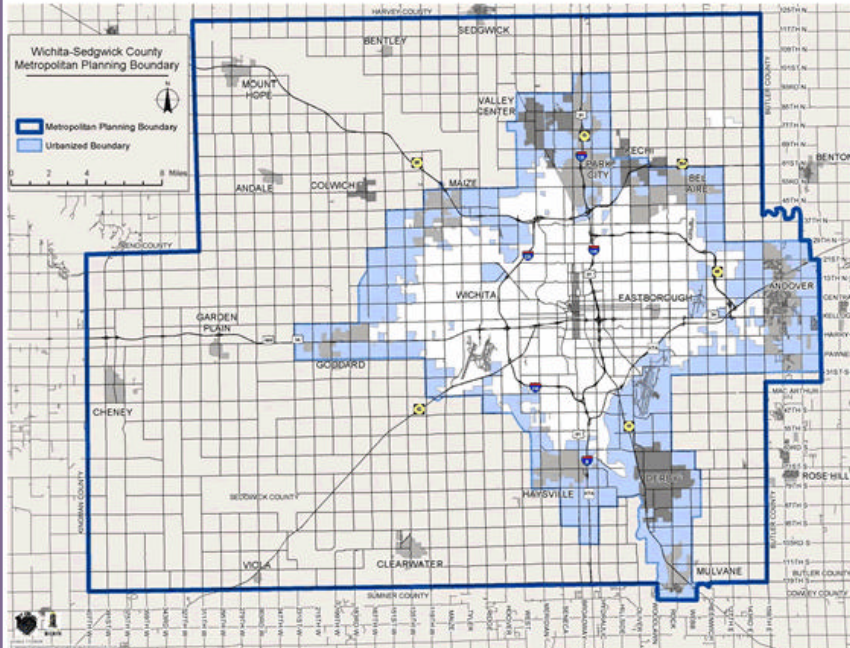
http://www.iteris.com/wichitaarchitecture/ Go

bLink Customize Links Explore the Web Free Hotmail New User Search Support The Arena

National ITS Architecture Home

Wichita Regional ITS Architecture

Welcome to the Wichita Regional Intelligent Transportation System Architecture web site. This site will provide you with information on the development of the Wichita Architecture..



Wichita-Sedgewick County Metropolitan Planning Boundary

Metropolitan Planning Boundary
Urbanized Boundary

Version 1.0
Site updated: 03/04/05

Done

The Architecture is Ready for MPO Adoption

- This Architecture forms the Blueprint for Transportation System Integration for the Region
- This is Your Architecture and it Reflects Your Existing and Future ITS projects
- Over 60 stakeholders have participated on this activity

Periodic Architecture Maintenance

- The Wichita – Sedgwick County Architecture is a Living Document held by the MAPD
 - New Projects
 - New Stakeholders
 - Changing Priorities
 - Reorganizations
 - New ITS-related services
- Maintenance Process is addressed in the Implementation Plan

Wichita – Sedgwick County Regional ITS Architecture Information

- Jamsheed Mehta, MAPD – Chief Planner
 - (316) 268-4457
 - jmehta@wichita.gov
- Jeff Brummond, Iteris – Project Manager
 - (703) 925-3813
 - jab@iteris.com
- Mike Malone, Iteris – Deputy Project Manager
 - (402) 476-5101
 - msm3@iteris.com
- Project Web Site
 - www.iteris.com/wichitaarchitecture

Recommendation

- Review the Regional ITS Architecture
 - Volume 1
- Set Public Comment Period (March 10 – 31)
- Set Public Hearing (April 14) to Adopt Volume 1